



Social / Behavioral Sciences and Human Services



CAREER + ACADEMIC
COMMUNITIES

at St. Petersburg College

SOCIAL / BEHAV SCIENCES HUMAN SER

WHY ST. PETERSBURG COLLEGE?

At St. Petersburg College, you'll find a community focused on you. With relevant workforce training and attention to the needs of every student, we create an environment where everyone can find an educational path that meets their goals. SPC stands apart - and so should you.

VALUE

Our tuition is half that of state universities.

SUCCESS

We offer free tutoring, resources and the support you need to succeed.

CHOICE

We offer over 110 academic programs and 20 bachelor's degrees. And our partnerships with the University of South Florida System (FUSE) and Florida A&M (Ignite) guarantee admission into select bachelor's degree programs for eligible students who complete an associate degree at SPC.

OPPORTUNITY

We have many internship opportunities and offer free career advising to help you find the right job.



CONVENIENCE

With multiple locations, more than 50 programs fully online, and day, night and weekend classes, we make it possible for you to have a schedule that is convenient for you.

COMMUNITY

Located in the heart of Pinellas County, SPC has forged partnerships with many local organizations. These partnerships provide our students internships where they gain valuable workplace experience and forge relationships throughout Tampa Bay.

LEADERSHIP AND OPPORTUNITIES



Pinellas County Commissioner Charlie Justice and former St. Petersburg Assistant Chief of Police Luke Williams visit a State and Local Government class.

Cover: SPC students participate in the National Model United Nations Conference in New York.

Abnormal Psychology class students take part in International Studies in Ecuador.

St. Petersburg College

SPC

DEGREES AND TRAINING

ASSOCIATE IN ARTS (A.A.) TRANSFER PLANS

Affiliated Economics - FUSE, USF St. Petersburg
Anthropology - FUSE, USF St. Petersburg
History - FUSE, USF St. Petersburg
Interdisciplinary Social Science
- FUSE, USF St. Petersburg
Political Science - FUSE, USF St. Petersburg
Psychology
Psychology - FUSE, USF St. Petersburg
Social Work

ASSOCIATE IN SCIENCE (A.S.) DEGREE

Social and Human Services

CERTIFICATES

Addiction Studies
Community Health Worker
Youth Development Professional



Political Science students and faculty engage with journalist and author Marvin Kalb.



SOCIAL / BEHAVIOR



SPC's award-winning Model U.N. team at the National Model United Nations Conference in New York.

MODEL UNITED NATIONS

The Model United Nations program at St. Petersburg College offers a course and opportunities to train students in real-world diplomacy and to learn more about international relations and organizations. Students gain valuable research, writing and speaking skills while discussing global issues with students from around the world. SPC's team has won the highest award presented by the National Model United Nations several years in a row.



SOCIAL SCIENCES

With engaging classes such as anthropology, political science and history, the Division of Social / Behavioral Sciences and Human Services focuses on understanding individual and social behavior in society. Our classes can help satisfy general education or elective requirements for the Associate in Arts or Associate in Science degree or for the bachelor's degree in Health Services Administration.

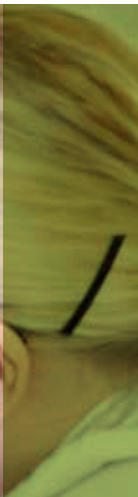
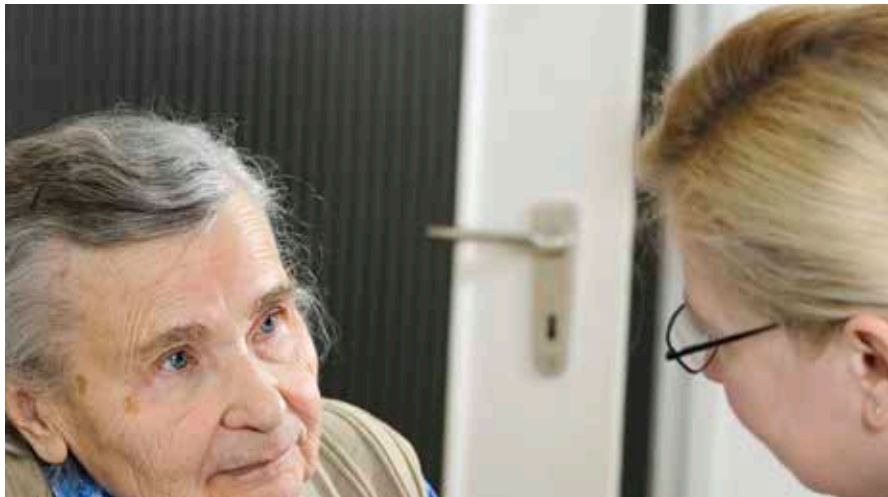


Our programs provide hands-on learning experiences, both in and out of the classroom.

FACULTY

SPC faculty hails from many different backgrounds, but all have lifetime commitments to service. Our diverse array of professors all have advanced degrees, and many have served on policy panels and as social advocates.

spcollege.edu



ASSOCIATE IN SCIENCE DEGREE



SOCIAL AND HUMAN SERVICES

A degree or certificate in Human Services provides a variety of opportunities to help others in the fields of mental health, addiction, counseling, community health, social work, sociology and youth development.

Our certificates can get you working in an entry-level job quickly, but they are also building blocks toward higher degrees such as our Associate in Science degree in Social and Human Services. Students who choose the Addiction Studies subplan or certificate complete the education requirements to become a Certified Addiction Counselor (CAC), Certified Addiction Professional (CAP) or Certified Behavioral Health Technician (CBHT). Students who choose the Community Health Worker subplan or certificate complete the education requirements to become a Certified Community Health Worker (CCHW).

The Social and Human Services A.S. degree transfers to our bachelor's degree in Health Services Administration.

To learn more about job growth and salary potential, go to stpe.co/asshs.

CENTER FOR CIVIC LEARNING AND COMMUNITY ENGAGEMENT

The Social/Behavioral Sciences and Human Services Division collaborates with the Sixth Judicial Circuit Outreach of the Public Defender's Office in a psychology internship program. Select SPC students complete a four-hour training in Milieu or Group therapy, and an eight-hour training in working with homeless populations. The interns then begin a shadowing and skill-development process, prior to working with residents in small teams and facilitating listening groups. In partnership with Pinellas Safe Harbor, St. Petersburg College students are working with the local homeless population to provide support, identify areas of need, and connect residents to community resources.



Human Services Program students participate in community engagement.



Social / Behavioral Sciences and Human Services



Citizenship Ambassador Initiative USCIS
Naturalization Ceremony

READY TO TAKE THE NEXT STEP?

**APPLY TODAY
OR CALL 727-341-3400
TO LEARN MORE.**

St. Petersburg College

SPC

St. Petersburg College is committed to equal access/equal opportunity in its programs, activities, and employment. For additional information visit www.spcollege.edu/eaeo/.

This material was funded in part by the \$2.49 million 2018-19 Carl D. Perkins Career & Technical Education federally funded grant.

5/2019

spcollege.edu