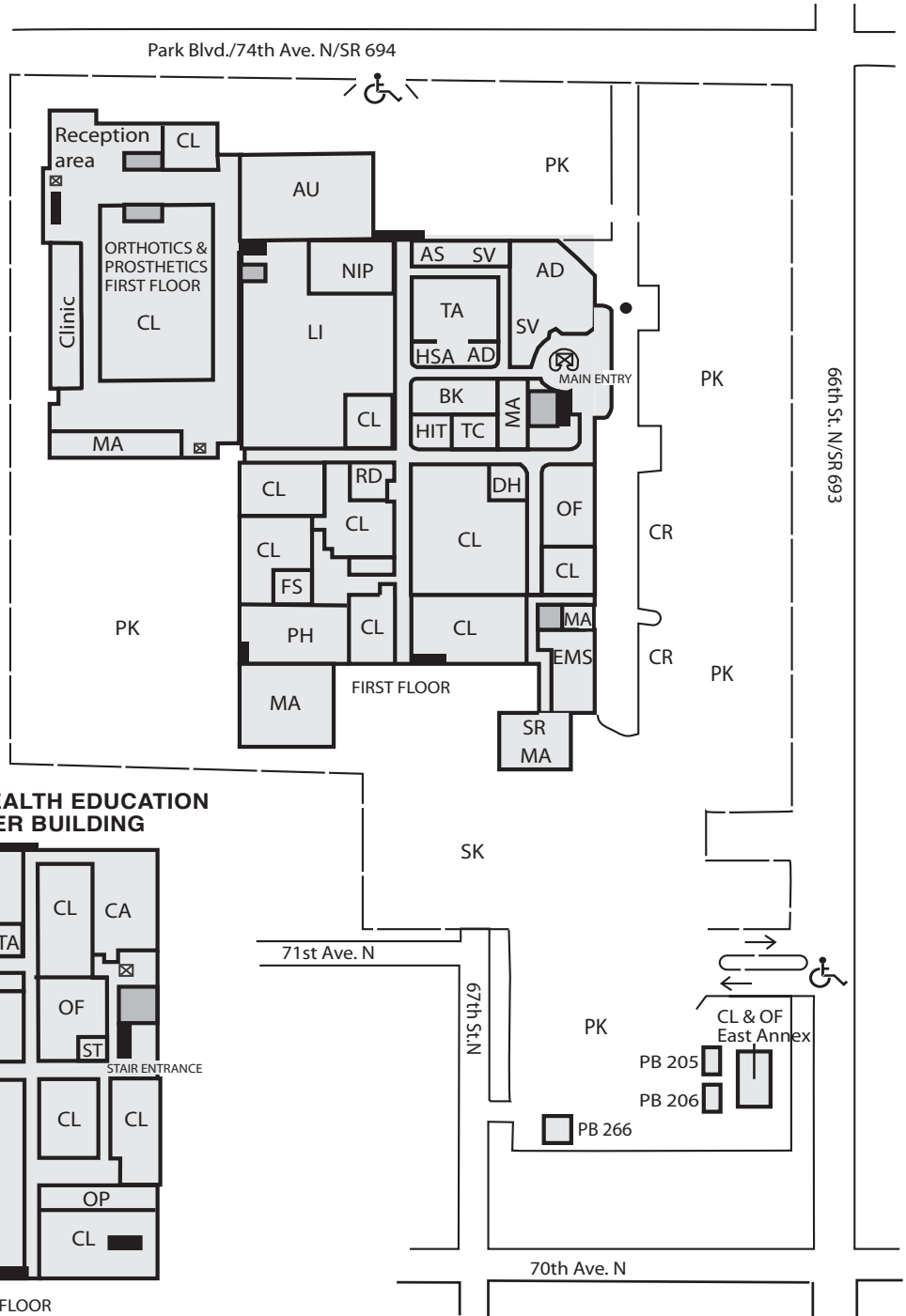
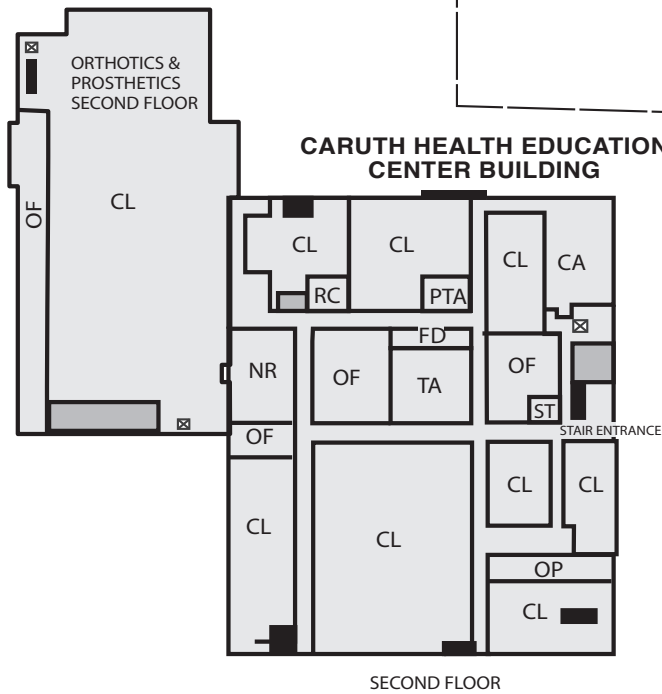
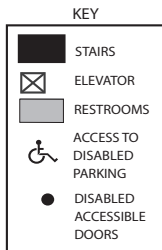


# Caruth Health Education Center

**Caruth Health Education Center**  
7200 66th St. N  
Pinellas Park



**Caruth Health Education Center Room Codes**

- |                                      |                                    |                                  |
|--------------------------------------|------------------------------------|----------------------------------|
| AD - Administration                  | LI - Library                       | SK - Staff parking               |
| AS - Accessibility Services          | MA - Maintenance                   | ST - Student Life and Leadership |
| AU - Auditorium                      | NIP - New Initiative Program       | SV - Student Services            |
| BK - Bookstore                       | NR - Nursing                       | TA - Teaching Auditorium         |
| CA - Cafeteria                       | OF - Offices                       |                                  |
| CL - Classrooms                      | TC - Testing Center                |                                  |
| CR - Clinic Parking                  | PB - Portables 205,206 & 266       |                                  |
| DH - Dental Hygiene                  | PH - Physical Plant/Receiving      |                                  |
| EMS - Emergency Medical Services     | PK - Student parking               |                                  |
| FS - Funeral Services                | PTA - Physical Therapist Assistant |                                  |
| HIT - Health Information Technology  | RC - Respiratory Therapy           |                                  |
| HSA - Health Services Administration | RD - Radiography                   |                                  |



**QUICK LINKS**

- Tour Our Campus
- About Our Campus
- Campus Map
- Campus Services
- Classes on Campus
- Degrees on Our Campus
- Directions to Campus



## HEALTH EDUCATION CENTER

If you've ever received health care for yourself or a pet in Pinellas County, chances are you were cared for by a graduate of St. Petersburg College. And it all starts at SPC's Caruth Health Education Center, where our health programs prepare you for the challenges and complexities of the healthcare field.

**EVENTS**

- SEP 07, 2022 - APR 05, 2023** 11:30 AM TO 1:00 PM  
 MONTHLY LUNCH AND LEARN  
 HEALTH EDUCATION CENTER
- JAN 05, 2023** 6:00 PM TO 7:00 PM  
 GET READY FOR ADVISING!  
 VIRTUAL EVENT
- JAN 10, 2023** 6:00 PM TO 7:00 PM  
 ST. PETERSBURG COLLEGIATE HIGH SCHOOL - ST. PETE/GIBBS CAMPUS INFORMATION SESSION  
 ST. PETERSBURG/GIBBS CAMPUS | VIRTUAL EVENT
- JAN 11, 2023** 6:00 PM TO 7:00 PM  
 WHY SPC AND HOW TO BECOME A TITAN  
 VIRTUAL EVENT
- JAN 12, 2023** 6:00 PM TO 6:01 PM  
 GET READY FOR ADVISING!  
 VIRTUAL EVENT

[VIEW ALL EVENTS](#) ➔

**HEALTH BLOG POSTS**

- 
**SPC Nursing Program Listed Among 2022 'Best of the Best' by Tampa Bay Times**  
 The College of Nursing at St. Petersburg College received a silver award for best nursing college in the Tampa Bay Times' 2022 "Best of the Best" People's Choice Awards.
- 
**SPC's Vet Tech Named Program of the Year**  
 SPC's Veterinary Technology Program was recognized as the 2022 Program of Year by the Association of Veterinary Technician Educators.
- 
**An Enriching Summer for SPC's Vet Tech Faculty and Students**  
 This summer has certainly been one of teaching and learning for the SPC Veterinary Technology Center!
- 
**SPC Nursing Accreditation Renewed**  
 St. Petersburg College's baccalaureate degree program in Nursing received accreditation from the CCNE.
- 
**Respiratory Care program receives seventh**

[APPLY TO SPC](#) →

[REQUEST HEALTH ADVISING](#) →

[COLLEGE BOOKSTORE](#) →

[STUDENT AFFAIRS](#) →

[HEALTH ADMISSIONS](#) →

[STUDENT LIFE](#) →



### Health Training Leader

Our specialized health care programs can prepare you for some of the fastest growing careers in Florida.

[Health Programs](#)



### Dental Hygiene Clinic

Our clinic delivers supervised training for Dental Hygiene students and affordable preventive dental care for residents.

[Dental Hygiene Clinic](#)



### New Initiative Program

As a health student at SPC, you have access to personalized support and tutoring tailored to your specific studies.

[New Initiative Program](#)



DOWNLOAD HEALTH EDUCATION CENTER MAP

### ACCESSIBILITY SERVICES

BLDG HE, ROOM 180 | [727-341-3721](tel:727-341-3721)

### BUSINESS OFFICE

BLDG HE, ROOM 173 | [727-341-3427](tel:727-341-3427)  
Includes paying for classes and student records.

### CAREER AND ACADEMIC ADVISING

BLDG HE, ROOM 173

### BOOKSTORE

BLDG HE, ROOM 184 | [727-202-3602](tel:727-202-3602)

### CAREER SERVICES

BLDG HE, ROOM 174 | [727-341-3777](tel:727-341-3777)

### COLLEGE RECRUITING

BLDG HE, ROOM 166 | [727-341-3402](tel:727-341-3402)

### CONNECTIONS

BLDG HE, ROOM 165 | [727-341-3767](tel:727-341-3767)

### FINANCIAL AID

BLDG HE, ROOM 173 | [727-791-2485](tel:727-791-2485)

### FOOD SERVICES

BLDG HE, ROOM 204

### LEARNING RESOURCES

BLDG HE, ROOM 191 | [727-341-3604](tel:727-341-3604)

### LOST AND FOUND

BLDG HE, ROOM 104D | [727-341-3471](tel:727-341-3471)

### PARKING

[727-341-3654](tel:727-341-3654)

### SECURITY

BLDG HE, ROOM 104D

### STUDENT ID

BLDG HE ROOM 195 - Library | [727-341-3427](tel:727-341-3427)

### STUDENT LIFE AND LEADERSHIP

BDLG HE, ROOM 183 | [727-341-4480](tel:727-341-4480)

### STUDENT LOUNGE

BLDG HE, ROOM 176

### TESTING

BDLG HE, ROOM 101 | [727-341-4187](tel:727-341-4187)

### VETERANS SERVICES

[727-341-7990](tel:727-341-7990)