

2022-23 STUDENT HANDBOOK AND PLANNER



SPC St. Petersburg
College



SPC is here to help you navigate student life and offers several resources to keep you safe and healthy.

Visit our Titans Care Centers to find out more about:

- Counseling Services
- Child Care Assistance
- Food Pantries
- Free PSTA Bus Rides
- Other Community Resources for Life Issues

Scan QR Code for more information
on Titans Care Center Programs





This Student Handbook belongs to:

Name _____

Address _____

City, State, ZIP Code _____

Phone _____

Email _____

This handbook is intended to enhance your college experience. Inside, you will find helpful tips on resources available to you to help you succeed. You also will find a calendar to help you plan your school-related activities.

SPC makes it easy for you to keep up with important information by posting deadline reminders, event promotions, weather alerts, college closings and a variety of information on campus and online.

QUICK REFERENCE ONLINE RESOURCES

spcollege.edu | 727-341-4772 | P.O. Box 13489, St. Petersburg, FL 33773-3489

- Academic Calendar spcollege.edu/calendar
- Admissions/Re-Admissions spcollege.edu/admissions
- Advising spcollege.edu/advising
- Board of Trustees and College Rules, Policies and Procedures web.spcollege.edu/botrules
- Bookstore spcollege.bncollege.com
- Career Services/Career Tools spcollege.edu/career-services
- College Catalog spcollege.edu/catalog
- Emergency Alerts spcollege.edu/emergency-alerts
- Faculty and Staff Directory contactdirectory.spcollege.edu
- Financial Aid spcollege.edu/financial-aid
- Online Tools spcollege.edu/online-tools
- Residency spcollege.edu/residency
- Services by Campus..... spcollege.edu/services-by-campus
- Social Media spcollege.edu/social-media
- Student Email one.spcollege.edu
- Student Right-to-Know..... spcollege.edu/student-rights
- Tech Support support.spcollege.edu
- Transcripts spcollege.edu/transcripts
- Titans Video Portal stpe.co/titansvideo

© 2022-23 St. Petersburg College. All rights reserved. Information and college policy outlined in this Student Handbook and Planner is subject to change.

Quick Reference Online Resources	1
SPC Mission Statement	3
Degree and Training Information	4-7
Student/Faculty Snapshot	8
Academic Calendar	9-11
Campus Locations and Leadership	12
Contact Information - College Administration	
Accessibility Services	13
Admissions and Records	13-14
Advising - <i>Career and Academic Advising</i>	14
Athletics	14
Bookstore - Barnes & Noble	14
Business Office	14-15
Career Services	15
Emergency Management	15
Financial Aid	16
Food Services	16
High School Programs	17
Honors Programs	17
International Programs	17
Learning Resources	18
Library	18-19
Lost and Found	19
Registration - <i>See Advising</i>	19
Security	19
Student Life and Leadership	19
Student Lounges	20
Student Photo ID	20
Student Support Programs	20
Testing	20
Titan Connect - <i>Event App</i>	21
Transcripts - <i>See Admissions and Records</i>	21
University Partnership Center	21
Veterans Services	21
Women on the Way	21
Workforce Education	21
Contact Information - Career and Academic Communities	
Arts, Humanities, and Design	22
Business	22
Communications	22
Education	22
Engineering, Manufacturing, and Building Arts	22
Health Sciences and Veterinary Technology	23
Public Safety, Public Policy, Ethics, and Legal Studies	23
Science and Mathematics	24
Social and Behavioral Sciences and Human Services	24
Technology	24
Campus Maps	
Allstate Center	25
Caruth Health Education Center	26
Clearwater Campus	27
Downtown Center	28
EpiCenter	29
Midtown Center	30-31
Seminole Campus	32
St. Petersburg/Gibbs Campus	33
Tarpon Springs Campus	34
Veteran Technology Center	35
Important Student Information	
Academics	36-41
Registration	42
Student Life	43
Student Services	44-46
Financial Aid	47-48
Student Right-to-Know	49-53
Student Planner	55

The Board of Trustees of St. Petersburg College affirms its equal opportunity policy in accordance with the provisions of the Florida Educational Equity Act and all other relevant state and federal laws, rules and regulations. The college will not discriminate on the basis of race, color, ethnicity, religion, sex, age, national origin, marital status, pregnancy, sexual orientation, gender identity, genetic information, or against any qualified individual with disabilities in its employment practices or in the admission and treatment of students. Recognizing that sexual harassment constitutes discrimination on the basis of sex and violates this Rule, the college will not tolerate such conduct. Should you experience such behavior, please contact Dr. Devona Pierre, Director of Equity, Diversity and Inclusion, & Title IX Coordinator at 727-341-3261; by mail at P.O. Box 13489, St. Petersburg, FL 33733-3489; or by email at eaao_director@spcollege.edu.



MISSION STATEMENT

*Empower our students and community
to achieve success and economic mobility through
academic excellence and engagement*

CAREER + ACADEMIC COMMUNITIES

spcollege.edu/degrees-training

CAREER + ACADEMIC COMMUNITIES at St. Petersburg College

Our 10 Career and Academic communities group similar majors into concentrations so you'll benefit from advisors dedicated solely to your program, a closer connection to experienced faculty, collaboration with like-minded students, and a path toward your chosen profession.



Arts, Humanities, and Design

- Digital Media
- Humanities
- Performing Arts
- Studio Arts
- Music Industry Recording Arts



Business

- Business Administration
- Hospitality and Tourism Management
- Management and Organizational Leadership
- Sustainability Management



Communications

- Sign Language Studies
- Communications A.A. Transfer Plans



Education

- Early Childhood Education
- Educational Studies and Community Leadership
- Elementary Education
- Exceptional Student Education
- Math and Science: Middle Grades and Secondary Education
- Teacher Certification
- Continuing Education



Engineering, Manufacturing, and Building Arts

- Biomedical Engineering Technology
- Building Arts
- Engineering and Manufacturing
- Production Systems Management



Health Sciences and Veterinary Technology

- Dental Hygiene
- Emergency Medical Services
- Funeral Services and Arts
- Health Information Technology
- Health Services Administration
- Health Sciences
- Nursing
- Orthotics and Prosthetics Technology
- Physical Therapist Assistant
- Radiography
- Respiratory Care
- Surgical Services
- Veterinary Technology



Public Safety, Public Policy, and Legal Studies

- Paralegal Studies certificates, associates and bachelor's programs
- Public Policy and Administration
- Public Safety



Science and Mathematics

- Science – Biology, Biotechnology Laboratory Technology, Environmental Science Technology, Laboratory Specialist, Water Quality
- Mathematics A.A. Transfer Plans



Social and Behavioral Sciences and Human Services

- Human Services
- Social and Behavioral Sciences
- Addiction Studies, Youth Development and Community Health Workers Certificates
- A.A. Transfer Plans



Technology

- Computer Information Technology
- Computer Networking Technologies
- Computer Programming and Analysis
- Cybersecurity
- Data Science
- Technology Development and Management
- Web Development



Associate Degree

This is the general term for a two-year college degree.

- **Associate in Arts (A.A.)** – This is a 60-credit-hour degree that prepares students to transfer to a bachelor's degree at SPC or at a state university. If a student pursues an A.A. degree, they will take general education courses and state mandated pre-requisite courses required for the bachelor's degree.
- **Associate in Science (A.S.)** – This degree tends to be more focused and career-oriented than an A.A. degree. While those earning an A.S. degree may complete a bachelor's degree at SPC or transfer to a state university, many programs allow students to go straight into the workforce. A.S. degree programs have specific credit-hour requirements and limitations, so be sure to consult your academic pathway as well as an advisor.

Bachelor's Degree

This is the general term for a four-year college degree.

- **Bachelor of Arts (B.A.)** – Traditionally, this degree includes general education classes, foreign language, and classes in a focused area of study. Areas which traditionally grant a B.A. degree include communications, fine arts, and social sciences. This degree type generally requires 120 credit hours, a specific portion of which must be upper division (3000 or 4000 level) classes.
- **Bachelor of Science (B.S.)** – This degree includes general education classes and classes in a focused area of study but has not traditionally required a foreign language. Fields which traditionally grant B.S. degrees include science, business, engineering, nursing, and computer science.
- **Bachelor of Applied Sciences (B.A.S.)** – This degree is a recent innovation and is typically a four-year degree built upon an A.S. degree. Many of these degrees are offered by state colleges and tend to be work force degrees. This means that building job qualifications and job placement are stressed as a part of the curriculum.

Certificates

Certificates are shorter-term credentials that tend to be for specialized workforce skills. These may be a pre-degree award (part of a 2- or 4-year degree) or they may be post-graduation. Credit hours vary, with some requiring as few as 12 and others as many as 24.

Master's Degree

Master of Arts (humanities) or Master of Science (math or science) degrees are graduate degrees in specialized academic areas. They generally involve two years of study with a variety of classes taught and require a research component. Examples include:

- **M.B.A.** – Master's in Business Administration. This professional degree is considered a terminal (final) degree for business practitioners. Many business professionals have sought expanded skills through this practical degree meant to be used by people in the business professions.
- **M.F.A.** – Master's of Fine Arts. This is a final professional degree for people working in the fine arts. Theater, music, drawing, painting, ceramic, sculpture all might have these two-year graduate degrees intended to develop artistic skills.

Doctorate Degrees (Ph.D., Ed.D., DNP, etc.)

There are a variety of doctoral degrees, which, in many fields, is the highest academic credential. The Doctor of Philosophy (Ph.D.) is a research degree and is traditionally awarded in academic rather than practice areas (English literature, mathematics, biology or other sciences, philosophy, etc.). An Ed. D. is a doctorate in education and focuses on practice rather than research. A DNP is a doctorate in Nursing Practice

Juris Doctorate (JD)

This is the degree conferred for the standard American three-year law school curriculum. This credential from an ABA accredited law school allows graduates to sit for state bar licensing exams.

DEGREE AND TRAINING PROGRAMS

Associate in Arts (A.A.) and Bachelor's Degrees (B.S., B.A.S.)

Interested in shooting for, or going back to finish, a bachelor's degree? SPC offers an Associate in Arts (A.A.) two-year degree, which can be completed fully online, to pave your way to one of our 19 baccalaureate (B.A., B.A.S.) four-year degrees. A.A. degrees are designed to prepare students planning to pursue a baccalaureate degree.



- Biology B.S. Degree
- Business Administration B.S. Degree
- Cybersecurity B.A.S. Degree
- Dental Hygiene B.A.S. Degree
- Educational Studies and Community Leadership B.S. Degree
 - Early Childhood Education Subplan
 - Educational Interpreting Subplan
 - Interdisciplinary Subplan
- Elementary Education B.S. Degree
- Elite Educator Program Elementary Education B.S. Degree
- Exceptional Student Education B.S. Degree
- Health Services Administration B.A.S. Degree
- Health Services Administration B.A.S. Degree Respiratory Care
- Management and Organizational Leadership B.A.S. Degree
- Middle Grades Mathematics Education B.S. Degree
- Nursing B.S. Degree
- Paralegal Studies B.A.S. Degree
- Public Policy and Administration B.S. Degree
- Public Safety Administration B.A.S. Degree
- Secondary Mathematics Education B.S. Degree
- Sustainability Management B.A.S. Degree
- Technology Development and Management B.A.S. Degree
- Veterinary Technology B.A.S. Degree

Read more about these programs at spcollege.edu/degrees-training.

Associate in Science (A.S.) Degrees

Our Associate in Science degrees are designed to get you into the workforce with a two-year program.



- Biomedical Engineering Technology A.S. Degree
- Biotechnology Laboratory Technology A.S. Degree
- Building Design and Construction Management A.S. Degree
- Business Administration A.S. Degree
- Computer Information Technology A.S. Degree
- Computer Programming and Analysis A.S. Degree
- Crime Scene Technology A.S. Degree
- Criminal Justice Technology A.S. Degree
- Cybersecurity A.S. Degree
- Data Science A.S. Degree
- Dental Hygiene A.S. Degree
- Digital Forensics and Computer Investigations A.S. Degree
- Digital Media A.S. Degree
- Early Childhood Education A.S. Degree
- Emergency Administration and Management A.S. Degree
- Emergency Medical Services A.S. Degree
- Engineering Technology A.S. Degree
- Environmental Science Technology A.S. Degree
- Fire Science Technology A.S. Degree
- Funeral Services A.S. Degree
- Health Information Technology A.S. Degree
- Health Sciences A.S. Degree
- Hospitality and Tourism Management A.S. Degree
- Music Industry Recording Arts (MIRA) A.S. Degree
- Networking Technologies A.S. Degree
- Nursing A.S. Degree
- Nursing A.S. Degree - LSN Transitional
- Orthotics and Prosthetics Technology A.S. Degree
- Paralegal Studies A.S. Degree
- Physical Therapist Assistant A.S. Degree
- Production Systems Management A.S. Degree
- Radiography A.S. Degree
- Respiratory Care A.S. Degree
- Respiratory Care A.S. Degree - CRT Transitional
- Social and Human Services A.S. Degree
- Veterinary Technology A.S. Degree
- Web Development A.S. Degree

Read more about these programs at spcollege.edu/degrees-training.

DEGREE AND TRAINING PROGRAMS

Certificate (CT) Programs and Continuing Education

Are you looking to get into the workforce quickly, or update your current skills? Check out our certificate programs, many of which take less than a year to complete and give you the skills to excel in your chosen career. Certificate programs are available through either the college's academic communities or our Workforce, Community, & Corporate Partnerships division, which also provides other short-term training. These programs are offered in the areas of:

- **Business** – including accounting, entrepreneurship, event planning, homeland security, management, marketing, operations, and project management.
- **Health Care** – including addiction studies, adult critical care, community health, funeral arts, health care informatics, laboratory specialist, medical coding, medical equipment repair, paramedics, and phlebotomy.
- **Engineering, Manufacturing and Building Arts** – including electronics aide, engineering technology support, mechatronics, rapid prototyping and design, supply chain logistics, sustainable construction, and water quality technician.
- **Public Safety and Legal Studies** – including corrections academy, crime scene technology, emergency administration, emergency medical technician, firefighting academy, law enforcement academy, paralegal studies, and public safety telecommunication.
- **Technology** – including everything from basic literacy to computer programming, cybersecurity, design, digital media, help desk support, network administration, and web development.



Check out an up-to-date listing of certificates and short-term training programs at spcollege.edu/workforce. Additional certificate programs offered within the college's academic communities may be viewed at spcollege.edu/certificates.

Bachelor's Degree Transfer Programs

Got your heart set on obtaining your bachelor's degree at a specific state university? Get your AA at SPC and take advantage of the state's 2+2 Program to guarantee your admission as a junior to one of Florida's 12 state universities. Or join one of SPC's several institution-specific transfer programs to get you to that school of your dreams. We'll help you every step of the way!



The Pinellas Access to Higher Education program is a partnership with SPC and USF-SP that allows you to earn your associate's and bachelor's degree in Pinellas County.



The FUSE program guarantees admission to eligible students into select programs at the University of South Florida.



The UCF Transfer Connect Program offers a clear path for students to transfer to one of UCF's bachelor's programs.



The IGNITE Program guarantees admission to eligible students into select programs at Florida A&M University.

University Partnership Center Bachelor's and Graduate Degrees

The UPC, located on the Seminole campus, offers degrees from a variety of fully-accredited colleges and universities, including Barry, Bellevue, Case Western Reserve Nursing, Embry-Riddle, Florida State, University of Florida, University of South Florida, Florida International, Florida Gulf Coast, Florida Institute of Technology, Fordham, and St. Leo universities.

Visit spcollege.edu/upc.

Age – Fall 2021

Students 24 and younger	56.3%
Students 25 and older	43.7%
Average age of A.A. students	23.1
Average age of A.S. students	29.2
Average age of Baccalaureate students	32.9
Average age of all students	26.6

(Source: Institutional Research, PULSE BI 2/9/2022)

Gender – Fall 2021

Female	61.0%
Male	36.8%
Not disclosed	2.1%

(Source: Institutional Research, PULSE BI 2/9/2022)

Ethnicity – Fall 2021

African-American	12.6%
American-Indian	0.3%
Asian	4.5%
Hispanic	17.1%
Pacific Islander	0.2%
White	58.4%
Multiple races	4.0%
Not reported	2.8%

(Source: Institutional Research, PULSE BI 2/9/2022)

Residency – Fall 2021

In-state	97.9%
Out-of-state	2.1%

(Source: Institutional Research, PULSE BI 2/9/2022)

2020-2021 Annual Enrollment (Head Count)

Credit	35,571
Non-Credit	3,969
Total	39,540

(Source: "At a Glance", Fact Book 2021-22)

School and Work – Fall 2021

Part-time students	74.3%
Full-time students	25.7%
Average student load	8.3 credits

(Source: "At a Glance", Fact Book 2021-22)

About our Instructors

Of the 1,598 instructional employees, 465 hold doctoral degrees, while 788 have master's degrees and 212 have a master's plus 30 additional credit hours in their discipline.

School Mascot: Titans

In Greek mythology, the Titans were a family of giants who ruled the Earth. Today, the term Titan represents one who is gigantic in size or power or who stands out for greatness of achievement.

School Colors and Motto

SPC's colors are blue and white, representing the qualities of truth and light. The college's motto, "Lux et Veritas" is Latin for (you guessed it) light and truth.

Accreditation

St. Petersburg College is accredited by the Southern Association of Colleges and Schools Commission on Colleges (SACSCOC) to award Bachelor of Science degrees, Bachelor of Applied Science degrees, Associate in Arts degrees, Associate in Science degrees, as well as certificates, applied technical diplomas, and advanced technical certificates. Questions about the accreditation of St. Petersburg College may be directed in writing to the Southern Association of Colleges and Schools Commission on Colleges at 1866 Southern Lane, Decatur, GA 30033-4097, by calling (404) 679-4500, or by using information available on SACSCOC's website (sacscoc.org).



Calendar subject to change. For an updated calendar of academic events, visit spcollege.edu/calendar.

	FALL FULL TERM Aug. 15- Dec. 9	1ST 8-WEEK SESSION Aug. 15- Oct. 7	WEEKEND COLLEGE Aug. 19- Dec. 4	12-WEEK EXPRESS SESSION Sept. 12-Dec. 9	2ND 8-WEEK SESSION Oct. 10- Dec. 9
CLASS DATES					
First day of classes	Aug. 15	Aug. 15	Aug. 19	Sept. 12	Oct. 10
Last day of classes	Dec. 8	Oct. 7	Dec. 4	Dec. 8	Dec. 8
ADMISSIONS					
Priority application deadline	Aug. 1	Aug. 1	Aug. 1	Aug. 1	Aug. 1
Priority application deadline for bachelor's programs	July 10	July 10	July 10	July 10	July 10
Health programs admissions deadlines	Dates vary by program. Visit spcollege.edu/health-admissions for details.				
International students application deadline	June 1, 2021	June 1, 2021	June 1, 2021	June 1, 2021	June 1, 2021
REGISTRATION - Registration is not allowed after first class meets.					
View class offering in MySPC	April 4	April 4	April 4	April 4	April 4
Special Programs	April 18	April 18	April 18	April 18	April 18
Registration (All sessions)	April 20	April 20	April 20	April 20	April 20
Senior citizens/state employees	Aug. 12	Aug. 12	Aug. 12	Aug. 12	Aug. 12
Last day to add a class	Aug. 17	Aug. 15	Aug. 24	Sept. 13	Oct. 10
TUITION/FINANCIAL AID					
Payment Plan enrollment deadlines	TBA	TBA	TBA	TBA	TBA
Tuition Universal due date	TBA	TBA	TBA	TBA	TBA
Last day to pay online w/FL prepaid (by noon)	Visit spcollege.edu/payment-plan for all tuition payment plan dates.				
View all financial aid deadlines	Visit spcollege.edu/financial-aid-dates for all financial aid deadlines.				
LAST DAY TO DROP, RECEIVE REFUND, AND/OR CHANGE TO AUDIT					
Last day to drop with a refund	Aug. 19	Aug. 19	Aug. 26	Sept. 16	Oct. 14
LAST DAY TO WITHDRAW *WITH GRADE OF "W"					
Last day to withdraw with grade of "W"	Oct. 18	Sept. 15	Oct. 18	Oct. 30	Nov. 10
* FINANCIAL ASSISTANCE RECIPIENTS:	If you completely withdraw from the College anytime on or before the dates of your session, you may incur repayment of Financial Assistance funds. See financial aid withdrawal deadlines.				
NO CLASSES FOR STUDENTS (ALSO SEE COLLEGE CLOSED DATES BELOW)					
Discovery Day	Oct. 25	Oct. 25	Oct. 25	Oct. 25	Oct. 25
Thanksgiving Break	Nov. 20-26	Nov. 20-26	Nov. 20-26	Nov. 20-26	Nov. 20-26
Winter Break	Dec. 10, 2022 - Jan. 16, 2023	Dec. 10, 2022 - Jan. 16, 2023	Dec. 10, 2022 - Jan. 16, 2023	Dec. 10, 2022 - Jan. 16, 2023	Dec. 10, 2022 - Jan. 16, 2023
EXAMS					
Mid-term exams (online)	Oct. 7-9				
Final exams (online)	Dec. 2-4				
Final exams	Dec. 5-8		Dec. 1-3	Dec. 5-8	Dec. 5-8
GRADUATION					
Name in program deadline	TBA	TBD	TBD	TBD	TBD
Commencement (final dates dependent on venue)	Dec. 10	Dec. 10	Dec. 10	Dec. 10	Dec. 10
FACULTY SCHEDULE					
Report for duty	Aug. 11	Aug. 11	Aug. 11	Aug. 11	Aug. 11
Last working day	Dec. 9	Dec. 9	Dec. 9	Dec. 9	Dec. 9
Final grades due in PS by 4 p.m.	Dec. 9	Oct. 7	Dec. 9	Dec. 9	Dec. 9
Discovery Day	Oct. 25	Oct. 25	Oct. 25	Oct. 25	Oct. 25
Thanksgiving Break	Nov. 20-26	Nov. 20-26	Nov. 20-26	Nov. 20-26	Nov. 20-26
Winter Break	Dec. 10, 2022 - Jan. 11, 2023	Dec. 10, 2022 - Jan. 11, 2023	Dec. 10, 2022 - Jan. 11, 2023	Dec. 10, 2022 - Jan. 11, 2023	Dec. 10, 2022 - Jan. 11, 2023
COLLEGE CLOSED					
Labor Day	Sept. 5	Sept. 5	Sept. 5	Sept. 5	Sept. 5
Veterans Day	Nov. 11	Nov. 11	Nov. 11	Nov. 11	Nov. 11
Thanksgiving Break	Nov. 20-26	Nov. 20-26	Nov. 20-26	Nov. 20-26	Nov. 20-26
Winter Break	Dec. 17, 2022 - Jan. 1, 2023	Dec. 17, 2022 - Jan. 1, 2023	Dec. 17, 2022 - Jan. 1, 2023	Dec. 17, 2022 - Jan. 1, 2023	Dec. 17, 2022 - Jan. 1, 2023

WINTER SESSION 2022-23 | SPRING 2023

Calendar subject to change.
For an updated calendar of academic events, visit spcollege.edu/calendar.

	WINTER SESSION	SPRING FULL TERM	1ST 8-WEEK SESSION	WEEKEND COLLEGE	12-WEEK EXPRESS SESSION	2ND 8-WEEK SESSION
	Dec. 12, 2022 Jan. 6, 2023	Jan. 17-May 12	Jan. 17- March 10	Jan. 21- May 7	Feb. 13-May 12	March 20- May 12
CLASS DATES						
First day of classes	Dec. 12, 2022	Jan. 17	Jan. 17	Jan. 21	Feb. 13	March 20
Last day of classes	Jan. 6, 2023	May 11	March 10	May 7	May 11	May 11
ADMISSIONS						
Priority application deadline	TBA	Jan. 3, 2023	Jan. 3, 2023	Jan. 3, 2023	Jan. 3, 2023	Jan. 3, 2023
Priority application deadline for bachelor's programs	Nov. 5, 2021	Nov. 12, 2022	Nov. 12, 2022	Nov. 12, 2022	Nov. 12, 2022	Nov. 12, 2022
Health programs admissions deadlines	Dates vary by program. Visit spcollege.edu/health-admissions for details.					
International students application deadline	Oct. 1, 2021	Oct. 1, 2021	Oct. 1, 2021	Oct. 1, 2021	Oct. 1, 2021	Oct. 1, 2021
REGISTRATION - Registration is not allowed after first class meets.						
View class offering in MySPC		Oct. 10, 2022	Oct. 10, 2022	Oct. 10, 2022	Oct. 10, 2022	Oct. 10, 2022
Special programs		Oct. 24, 2022	Oct. 24, 2022	Oct. 24, 2022	Oct. 24, 2022	Oct. 24, 2022
Registration (All sessions)		Oct. 26, 2022	Oct. 26, 2022	Oct. 26, 2022	Oct. 28, 2022	Oct. 26, 2022
Senior citizens/state employees		Jan. 13	Jan. 13	Jan. 13	Jan. 13	Jan. 13
Last day to add a class		Jan. 19	Jan. 17	Jan. 26	Feb. 14	March 20
TUITION/FINANCIAL AID						
Payment Plan enrollment deadlines	TBA	TBA	TBA	TBA	TBA	
Tuition Universal due date	TBA	TBA	TBA	TBA	TBA	
Last day to pay online w/FL prepaid (by noon)	Visit spcollege.edu/payment-plan for all tuition payment plan dates.					
View all financial aid deadlines	Visit spcollege.edu/financial-aid-dates for all financial aid deadlines.					
LAST DAY TO DROP, RECEIVE REFUND, AND/OR CHANGE TO AUDIT						
Last day to drop with a refund		Jan. 20	Jan. 20	Jan. 28	Feb. 17	March 24
LAST DAY TO WITHDRAW *WITH GRADE OF "W"						
Last day to withdraw with grade of "W"	Dec. 27	March 29	Feb. 17	March 28	April 9	April 20
NO CLASSES FOR STUDENTS (ALSO SEE COLLEGE CLOSED DATES BELOW)						
Spring Break		March 12-18	March 12-18	March 12-18	March 12-18	March 12-18
Spring Holiday		April 7-9	April 7-9	April 7-9	April 7-9	April 7-9
EXAMS						
Mid-term exams (online)		March 10-12				
Final exams (online)		May 5-7				
Final exams		May 8-11		May 4-6	May 8-11	May 8-11
GRADUATION						
Name in program deadline	TBD	TBA	TBD	TBD	TBD	TBD
Commencement (final dates dependent on venue)	May 13	May 13	May 13	May 13	May 13	May 13
FACULTY SCHEDULE						
Report for duty		Jan. 12	Jan. 12	Jan. 12	Jan. 12	Jan. 12
Last working day		May 12	May 12	May 12	May 12	May 12
Final grades due in PS by 4 p.m.		May 12	March 10	May 12	May 12	May 12
Semester break		March 12-18	March 12-18	March 12-18	March 12-18	March 12-18
COLLEGE CLOSED						
Spring Break		March 12-18	March 12-18	March 12-18	March 12-18	March 12-18
Spring Holiday		April 7-9	April 7-9	April 7-9	April 7-9	April 7-9
Martin Luther King Jr.'s Birthday		Jan. 16	Jan. 16	Jan. 16	Jan. 16	Jan. 16

Calendar subject to change. For an updated calendar of academic events, visit spcollege.edu/calendar.

	SUMMER FULL TERM	1ST 8-WEEK SESSION	WEEKEND COLLEGE	12-WEEK EXPRESS SESSION	2ND 8-WEEK SESSION
	May 22- July 28	May 22- July 14	May 27- July 23	June 20-July 28	June 5- July 28
CLASS DATES					
First day of classes	May 22	May 22	May 27	June 20	June 5
Last day of classes	July 27	July 14	July 23	July 27	July 27
ADMISSIONS					
Priority application deadline	May 8	May 8	May 8	May 8	May 8
Priority application deadline for bachelor's programs	April 7	April 7	April 7	April 7	April 7
Health programs admissions deadlines	Dates vary by program. Visit spcollege.edu/health-admissions for details.				
International students application deadline	March 1, 2022	March 1, 2022	March 1, 2022	March 1, 2022	March 1, 2022
Last day to apply for Study Abroad trips	Dates vary by trip. Visit stpe.co/studyabroad for details.				
REGISTRATION - Registration is not allowed after first class meets.					
View class offerings in MySPC	March 13	March 13	March 13	March 13	March 13
Special programs	March 27	March 27	March 27	March 27	March 27
Registration (All sessions)	March 29	March 29	March 29	March 29	March 29
Senior citizens/state employees	May 19	May 19	May 19	May 19	May 19
Last day to add a class	May 23	May 22	June 1	June 21	June 5
TUITION/FINANCIAL AID					
Payment Plan enrollment deadlines	TBA	TBA	TBA	TBA	TBA
Tuition Universal due date	TBA	TBA	TBA	TBA	TBA
Last day to pay online w/FL prepaid (by noon)	Visit spcollege.edu/payment-plan for all tuition payment plan dates.				
View all financial aid deadlines	Visit spcollege.edu/financial-aid-dates for all financial aid deadlines.				
LAST DAY TO DROP, RECEIVE REFUND, AND/OR CHANGE TO AUDIT					
Last day to drop, receive refund	May 26	May 26	May 3	June 23	June 9
LAST DAY TO WITHDRAW *WITH GRADE OF "W"					
Last day to withdraw with grade of "W"	June 30	June 22	June 30	July 12	July 6
* FINANCIAL ASSISTANCE RECIPIENTS:	If you completely withdraw from the college any time on or before the dates of your session, you may incur repayment of financial assistance funds. See spcollege.edu/withdrawals .				
NO CLASSES FOR STUDENTS (ALSO SEE COLLEGE CLOSED DATES BELOW)					
Memorial Day	May 29	May 29	May 29	May 29	May 29
Juneteenth	June 19	June 19	June 19	June 19	June 19
Independence Day observed	July 4	July 4	July 4	July 4	July 4
EXAMS					
Mid-term exams (online)	June 23-25				
Final exams (online)	July 21-23				
Final exams (Weekend)			July 20-22		
Final exams (Regular, express)	July 24-27			July 24-27	
GRADUATION					
SPC does not hold commencement in the summer.					
FACULTY SCHEDULE					
Report for duty	May 18	May 18	May 18	May 18	May 18
Last working day	July 28	July 28	July 28	July 28	July 28
Summer Break	May 13-18	May 13-18	May 13-18	May 13-18	May 13-18
Final grades due in PS by 4 p.m.	July 28	July 14	July 28	July 28	July 28
COLLEGE CLOSED					
Memorial Day	May 29	May 29	May 29	May 29	May 29
Juneteenth Holiday	June 19	June 19	June 19	June 19	June 19
Independence Day observed	July 4	July 4	July 4	July 4	July 4

Allstate Center

3200 34th St. S.
St. Petersburg, FL 33711
Provost: Leslie Hafer 727-341-4554
Associate Provost: Damon Kuhn 727-341-4554
Recruitment: Juan Amado 727-712-5883
Student Support Manager:
Dawn Janusz 727-341-3767

Bay Pines STEM Center

4723 Bay Pines Terr.
St. Petersburg, FL 33708
Provost: Leslie Hafer 727-341-4399
Director: Erica Moulton 727-344-8043

Caruth Health Education Center

7200 66th St. N.
Pinellas Park, FL 33781
Provost: Mark E. Strickland, Jr. 727-341-3664
Associate Provost: Damon Kuhn 727-341-3602
Recruitment: Celeste Daniels 727-341-3585
Student Support Manager:
Dawn Janusz 727-341-3767

Clearwater Campus

2465 Drew St.
Clearwater, FL 33765
Provost: Tashika Griffith 727-791-2475
Associate Provost: Matt Bowen 727-791-2488
Academic Services:
Joy Moore-Cruise 727-791-2542
Recruitment: Angeliki Kontodiakos 727-791-2544
Student Support Manager:
Cheri DeBlaere 727-614-7008

Downtown Center

244 Second Ave. N.
St. Petersburg, FL 33701
Provost: Eric Carver 727-341-7915
Associate Provost: Brooke Janik 727-341-7965
Academic Services: Djuan Fox 727-341-3334
Recruitment: Juan Amado 727-712-5883
Student Support Manager: 727-341-4248

EpiCenter

13805 58th St. N.
Clearwater, FL 33760
Provost: Tashika Griffith 727-791-2475
Acting Dean of Workforce Development,
Community and Corporate Partnerships:
Belinthia Berry 727-341-3311
Executive Director of Collaborative Labs:
Andrea Henning 727-341-3154

Midtown Center

Douglas L. Jamerson, Jr. Midtown Center
1300 22nd St. S.
St. Petersburg, FL 33710
Cecil B. Keene, Sr. Student
Achievement Center
1048 22nd St. S.
St. Petersburg, FL 33712
Provost: Eric Carver 727-341-7915
Associate Provost: 727-341-7159
Academic Services: Djuan Fox 727-341-3334
Recruitment: Juan Amado 727-712-5883
Student Support Manager: 727-341-4248

Seminole Campus

9200 113th St. N.
Seminole, FL 33772
Provost: Mark E. Strickland, Jr. 727-341-3664
Associate Provost: Lisa Borzewski 727-394-6109
Academic Services: Daniel Bueller 727-341-4221
Recruitment: Jerrick Rivera 727-341-3407
Student Support Manager:
Gigi Reiter 727-394-6949

St. Petersburg/Gibbs Campus

6605 Fifth Ave. N.
St. Petersburg, FL 33710
Provost: Leslie Hafer: 727-341-4399
Associate Provost:
Keron Jean-Baptiste 727-341-4399
Academic Services:
Stephen Andrasik 727-341-4275
Recruitment: Joven Jocelyn 727-341-3404
Student Support Manager:
Denotra Showers 727-791-2456

Tarpon Springs Campus

600 E. Klosterman Rd.
Tarpon Springs, FL 34689
Provost: Rodrigo Davis 727-712-5720
Associate Provost: Jennifer Carr 727-712-5260
Recruitment: Faith Pieterse 727-712-5440
Student Support Manager:
Theresa Kontodiakos 727-712-5451

Veterinary Technology Center

12376 Ulmertown Road
Largo, FL 33774
Provost: Mark E. Strickland, Jr. 727-341-3664
Associate Provost: Damon Kuhn 727-341-3602
Academic Services: Joseph Leopold 727-341-3719
Recruitment: Celeste Daniels 727-341-3585



College Administration Contacts

College Administration Hours*

Mon. - Thur. 8:30 a.m.-5:30 p.m. ET
 Friday 8:30 a.m.-1 p.m. ET

*See weblinks below for extended and limited on-campus and online/virtual availability.

Campus Legend

AC	Allstate Center	MT	Midtown Center
STEM	Bay Pines STEM Center	SE	Seminole Campus
CL	Clearwater Campus	SP/G	St. Petersburg/Gibbs Campus
DT	Downtown Center	TS	Tarpon Springs Campus
EPI	EpiCenter	VT	Veteran Technology Center
HEC	Health Education Center		

Accessibility Services

spcollege.edu/accessibility-services

Student ADA/504, Misty Kemp	727-614-7056
Rita Ajazi	727-341-4510
Assistive Technology, Regina Miller	727-341-3146
Assistive Technology, Travis Dimick	727-341-3029
Interpreting/Captioning/Sign Language, Stephanie Wyatt	727-791-5942

ONLINE HELP

Contact Information	spcollege.edu/accessibility-services-contacts
Register and Request Assistance	spcollege.edu/accessibility-services

CAMPUS HELP

AC	Stephanie Silvers	727-341-3721
CL	Jeff Zeigler	727-791-2710
	Robin Falone	727-791-2628
DT	Rita Ajazi	727-341-4510
EPI	Rita Ajazi	727-341-4510
HEC	Stephanie Silvers	727-341-3721
MT	Rita Ajazi	727-341-4510
SE	Kelli Mitchell	727-394-6289
	Debbie Pellissier	727-394-6007
	Susan Malone	727-394-6007
SP/G	Ray Hollowell	727-341-4316
TS	Rita Ajazi	727-341-4510
VT	Stephanie Silvers	727-341-3721

Admissions & Records

spcollege.edu/admissions

727-341-7141

Bachelor's Programs (Non-Health), David White	727-341-4725
Collegewide Testing, Sean Murren	727-341-3032
Transfer Programs, Sheryl Mundorff	727-791-2763

ONLINE HELP

Admissions	spcollege.edu/admissions	admissions.records@spcollege.edu
Graduation	spcollege.edu/graduation	graduationquestions@spcollege.edu
Health Programs Admissions	spcollege.edu/health-admissions	
Name/Record Change	spcollege.edu/forms-online	
Residency	spcollege.edu/residency	residencydocuments@spcollege.edu
Testing	spcollege.edu/testing	testing@spcollege.edu
Transcripts	spcollege.edu/transcripts	spctranscripts@spcollege.edu

Transfer Programs
Transient Students

spcollege.edu/special-programs
spcollege.edu/transient-students

transferprograms@spcollege.edu
transientquestions@spcollege.edu

CAMPUS HELP – Student Services Office

AC	AC 100	727-341-3750
CL	LA 100	727-341-4772
DT	DC 101 (Lobby)	727-341-4249
HEC	Room 173	727-341-4772
MT	MTJC 105A(Lobby)	727-341-7156
SE	UP Lobby	727-394-6134
SP/G	SU Building 1st Floor	727-341-4614
TS	Administration Bldg.	727-712-5750

Advising - Career & Academic Advising spcollege.edu/advising

727-341-4772

ONLINE HELP

Appointments: 30-minute Phone, Virtual, or In-person	spcollege.edu/advising
Virtual Advising Center: Phone or Virtual via Microsoft Teams	spcollege.edu/advising
Find your Advisor	spcollege.edu/advising
Health Programs - Make an Appointment	stpe.co/healthprogramadvising

CAMPUS HELP – Student Services Office

AC	AC 100
CL	LA 100
DT	DC 101(Lobby)
HEC	173 Student Affairs
MT	MTJC 100 (Lobby)
SE	UP 120
SP/G	SU 137
TS	Administration Building

Athletics

athletics.spcollege.edu

727-341-4777

Director, Davie Gill	727-341-4314	
Jennifer Chen	727-341-4777	chen.jennifer@spcollege

Bookstore – Barnes & Noble

spcollege.bncollege.com

ONLINE HELP

Order Books	spcollege.bncollege.com/course-material/course-finder
Paying for Your Books	spcollege.edu/paying-for-your-textbooks

CAMPUS LOCATIONS spcollege.bncollege.com/customer-service

CL	ST Building	727-431-4029
HEC	Room 184	727-202-3603
SE	Near Library	727-202-3542
SP/G	SS 104	727-347-0310
TS	BB Building	727-940-9019

Business Office

727-341-4772

ONLINE HELP

Florida Pre-Paid Tuition	spcollege.edu/florida-prepaid	prepaid@spcollege.edu
Pay tuition	spcollege.edu/tuition	
Tuition Fee Waivers & Exemptions	spcollege.edu/tuition-waivers	

CAMPUS HELP – Student Services Office

AC	AC 100	727-341-3750
CL	LA 100	727-791-2687
DT	DC 101 M (Lobby)	727-341-4249
HEC	Room 173	727-341-4772
MT	MTJC 118 (Lobby)	727-341-7156
SE	UP Lobby	727-394-6134
SP/G	SU 103	727-341-4763
TS	Administration Bldg.	727-712-5467

Career Services

spcollege.edu/career-services **727-394-6988**

ONLINE HELP

Contact Us	spcollege.edu/contact-career-services
Career and Internship Blog	blog.spcollege.edu/careers-internships
Career Exploration	spcollege.edu/career-exploration
Hire SPC Titans – Job Board	spcollege.joinhandshake.com
Internships	spcollege.edu/internships
Resume and Interview Assistance	spcollege.edu/resume-interview-assistance

CAMPUS HELP – Career Readiness Navigators

AC	Frances Rivera	727-341-4141
CL	Wanda Kimsey	727-791-2431
DT	Destineymarie Alicea	727-302-6690
HEC	Frances Rivera	727-341-4141
MT	Destinymarie Alicea	727-302-6690
SE	Aundra Williams	727-712-5443
SP/G	Fabre Williams	727-341-4254
TS	Carissa Roldan	727-497-5030

Emergency Management

spcemergency.com **727-791-2560**

Emergencies	Call 911 then 727-791-2560
Collegewide Dispatch	727-791-2560
SPC Toll-Free	866-822-3978

ONLINE HELP

College Emergency Information	spcemergency.com
Emergency Response Guide	stpe.co/emergencyresponseguide
Sign Up for Emergency Alerts	spcemergency.com/receiving-alerts
SPC Safety and Security	spcollege.edu/safety-security

CAMPUS HELP – Security Offices

AC	Main Building	727-341-4436
CL	LA 100	727-791-2764
DT	Lobby near Parking Garage	727-341-4262
HEC	HC-HE 104D	727-791-2560
MT	MTJC 118	727-398-8267
SE	UP 101	727-791-2560
SP/G	SU 120	727-791-2560
TS	Agora Bldg. AG 102-104	727-791-2560

Financial Aid

VIRTUAL HELP – Talk or Video Chat

Ask PETE our Chatbot a question [24/7/365](https://www.spcollege.edu/askfas)

ONLINE HELP

Submit Your Question Online
 How to Pay for College
 FAFSA
 Financial Aid TV videos
 Florida Pre-Paid College questions
 Book Line of Credit
 Disbursement/Refund Dates
 Receiving Financial Aid
 Student Employment
 Scholarships
 Satisfactory Academic Progress
 Student Loan Questions (Intuition™)
 Withdrawing From Class

[spcollege.edu/AskFAS](https://www.spcollege.edu/AskFAS)

727-791-2485

spcollege.edu/askfas – Click on Virtual

PETE is in the right corner at [spcollege.edu/financial-aid](https://www.spcollege.edu/financial-aid)

stpe.co/askfasrequest
[spcollege.edu/financial-aid](https://www.spcollege.edu/financial-aid)
[fafsa.gov](https://www.fafsa.gov)
[spcollege.financialaidtv.com](https://www.spcollege.edu/financialaidtv.com)
prepaid@spcollege.edu
[spcollege.edu/book-line-of-credit](https://www.spcollege.edu/book-line-of-credit)
[spcollege.edu/financial-aid-refunds](https://www.spcollege.edu/financial-aid-refunds)
[spcollege.edu/receiving-financial-aid](https://www.spcollege.edu/receiving-financial-aid)
[spcollege.edu/student-employment](https://www.spcollege.edu/student-employment)
[spcollege.edu/scholarships](https://www.spcollege.edu/scholarships)
[spcollege.edu/sap](https://www.spcollege.edu/sap)
 Sign on through MySPC or 855-693-4932
[spcollege.edu/withdrawals](https://www.spcollege.edu/withdrawals)

CAMPUS HELP – Check website for hours at each location

AC	Main Building	727-302-6434
CL	LA 100	727-791-2485
DT	DC 101 J	727-791-2485
HEC	Main Building	727-791-2485
MT	MTJC 109	727-341-7939
SE	UP Building	727-791-2485
SP/G	SU Building	727-791-2485
TS	Administration Building	727-791-2485

Food Services

[spcollege.edu/food-services](https://www.spcollege.edu/food-services)

AC	AC 129 - Common Ground Café		
CL	ES Building - Nature's Table Clearwater	clearwater.naturestable.com	727-669-2424
DT	1st Floor - Nature's Table DTSP	dtsp.naturestable.com	727-822-8690
HEC	Room 204 - Nature's Table HEC	hec.naturestable.com	727-201-8772
MT	MTJC 150 - Deuces Den Lounge	spcollege.edu/food-services	727-614-7209
SE	UPC 1st Flr. Lobby - Nature's Table Seminole	bardmoor.naturestable.com	727-319-0669
SP/G	LI Building - Nature's Table Gibbs	gibbs.naturestable.com	727-289-8772
TS	BB Bldg. - Nature's Table Tarpon	tarpon.naturestable.com	727-940-6644

VENDING MACHINES

AC	Main Building/AC 129
CL	ES All floors/LS, SS, NM 1st Flr./LI 1st Flor./CR-A, ST
DT	2nd/4th Floors
HEC	Main Building 2nd Floor (Cafeteria)
MT	1st/2nd/3rd Floors
SE	UP near Titan Lounge
SP/G	TE 1st Floor/SC 2nd Floor/SA 1St Flr./LA 1st Flr./SU 1st & 2nd Flr.
TS	Agora/Student Lounge

High School Programs

spcollege.edu/high-school-programs

ONLINE HELP

Collegiate High Schools	spchs.spcollege.edu
Dual Enrollment	spcollege.edu/dual-enrollment
Early Admission	spcollege.edu/early-admission
Early College	spcollege.edu/early-college

CAMPUS HELP – Dual Enrollment/Early College/Early Admission

CL	Jeff Cesta	727-791-5970
	Ana Cotto-Pizarro	727-791-5971
SE	Sherry Pantelidas	727-394-6164
	Lynne Wolf	727-394-6023
SP/G	Sherry Pantelidas	727-394-6164
	Lynne Wolf	727-394-6023
TS	Janine Small	727-712-5281
	Lori Condie	727-712-5400

COLLEGIATE HIGH SCHOOLS

St. Petersburg Collegiate STEM High School - Downtown Center	spchs.spcollege.edu
SPC Collegiate High School – St. Petersburg/Gibbs Campus	727-341-4610
Principal Raquel Giles	727-341-4368
LaDawn Bell	727-341-3563
Martha Alvarez	727-341-4610
SPC Collegiate High School – Tarpon Springs Campus	727-712-5891
Principal Ian Call	727-341-3521
Kellye Rainwater	727-712-5777
Annelies Williamson	727-712-5891

Honors Programs

spcollege.edu/honors-program 727-791-2708

Director, Earl Fratus	727-394-6045
Linda Chang, CL 185	727-791-2511

CAMPUS HELP

CL	Welcita Gann	727-791-5982
SE	Renee Kessing	727-394-6137
SP/G	Tara Hunter	727-302-6627
TS	James Ralph	727-712-5252

International Programs

spcollege.edu/international-programs

International Student Services, Angela Cole	727-791-2632
International Student Services, Irene Chitikov	727-341-4734
International Student Services, Ralph Regnier	727-341-4370
International Student Admissions, Eric Gonzalez-Franco	727-302-6510
Study Abroad	727-341-4735
International Student Services	spcollege.edu/international-students
International Admissions	Internationaladmissions@spcollege.edu
Study Abroad	stpe.co/studyabroad
Center for International Programs	spcollege.edu/international-programs

CAMPUS HELP

CL	LA Building LA190
SP/G	SU Building SU332
TS	FA Building (Library) FA148

Learning Resources

spcollege.edu/learning-resources

ONLINE HELP

Libraries & Learning Centers	spcollege.edu/learning-resources
Library Portal	stpe.co/libraryportal
How to get/use Student ID Card/Library Card	spcollege.edu/student-ID
Info Guides	spcollege.libguides.com/home
Tutoring – Make in-person appointment	spcollege.libguides.com/inperson
Tutoring – Make online appointment	spcollege.libcal.com/appointments
Accessing Tutoring 24/7 through Tutor.com	spcollege.libguides.com/onlinetutoringaccess
Virtual Learning Commons	stpe.co/virtualllearningcommons

CAMPUS HELP – Hours: spcollege.libguides.com/studentsneedtoknow

AC	Room 202 - Learning Center/Library/Computer Labs	727-791-2722
	Learning Resources Assc. Dir. - Paul Vermeren, Acting	727-791-2416
CL	LA 100 - Learning Center/Tutoring	727-791-2722
	LI (Library)	727-791-2614
	Learning Resources Assc. Dir. – Michele Laney	727-791-2525
DT	DC 202 and DC 109 - Learning Center Front Desk	727-302-6588
	Math Tutoring	727-302-6591
	Learning Resources Assc. Dir. - Heather Disler	727-344-8065
HEC	Room 199 - New Initiative Program (NIP)	727-341-3724
	Learning Resources Assc. Dir. - Josh Brown	727-341-3657
	Learning Resources Instr. Support Mgr. – Lisa Leonard	727-614-7213
MT	MTJC 120 & 210 Learning Support Commons/Tutoring Center	727-398-8268
	Learning Resources Assc. Dir. - Heather Disler	727-344-8065
SE	TL 104 - Learning Support Commons	727-341-3724
	Learning Resources Assc. Dir. - Jennifer Gregor	727-394-6184
SP/G	SU 203 - Learning Support Commons	727-341-3512
	2nd Floor Writing Studio	727-302-6405
	SA 101 Student Support Services	727-241-4372
	Learning Resources Assc. Dir. - Paul Vermeren	727-791-2416
TS	LY 236 - Learning Resource Center/Tutoring	727-712-5219
	Learning Resources Assc. Dir. - Ethan Hart	727-712-5728

Library

spcollege.edu/libraries

ONLINE

Libraries & Learning Centers	spcollege.edu/learning-resources
Library Portal	stpe.co/libraryportal
How to get/use Student ID Card/Library Card	spcollege.edu/student-ID
Info Guides	spcollege.libguides.com/home
Tutoring – Make in-person appointment	spcollege.libguides.com/inperson
Tutoring – Make online appointment	spcollege.libcal.com/appointments
Accessing Tutoring 24/7 through Tutor.com	spcollege.libguides.com/onlinetutoringaccess
Virtual Learning Commons	stpe.co/virtualllearningcommons

CAMPUS LOCATIONS – Hours: spcollege.libguides.com/studentsneedtoknow

AC	Main Bldg. - 2nd Floor	
CL	LI Bldg. - Clearwater East Community Library at SPC	727-791-2614
DT	DC 109	727-302-6588
HEC	Room 191 - Library & Writing Center Services	727-341-3604
MT	MTJC 120 Main Desk	727-398-8268
SE	LI Bldg. - Dennis L. Jones Seminole Community Library at SPC	727-394-6905

SP/G	LI Bldg. - West St. Petersburg Community Library st	SP/G	727-341-7199
TS	LI Bldg. - SPC Tarpon Springs Campus		727-712-5719

Lost and Found – *See also Security*

AC	Main Building/Security	727-341-4436
CL	SS 177	727-791-2764
DT	DC 225	727-614-7209
HE	Room 176	727-341-7914
MT	MTJC	727-614-7209
SE	UP 101	727-791-2560
SP/G	SS 111	727-302-6548
TS	Agora Bldg. - Security AG 102-104	727-712-5790

Registration – *See Advising*

spcollege.edu/advising

Security

Collegewide Dispatch
Emergencies
SPC Toll-Free

spcollege.edu/safety-security **727-791-2560**
727-791-2560
Call 911 then 727-791-2560
866-822-3978

ONLINE HELP

College Emergency Information
Sign Up for Emergency Alerts
Reporting Incidents

spcemergency.com
spcemergency.com/receiving-alerts
spcollege.edu/reporting-incidents

CAMPUS HELP – Security Offices

AC	Main Building	727-341-4436
CL	SS 177	727-791-2764
DT	Lobby near Parking Garage	727-341-4262
HEC	HC-HE 104D	727-791-2560
MT	MTJC 105A Student Services	727-341-7156
SE	UP 101	727-394-6248
SP/G	SU 120	727-791-2560
TS	Agora Buidling, AG 102-104	727-791-2560

Student Life and Leadership

spcollege.edu/student-life

ONLINE HELP

Events - Titan Connect by Presence
Events App
Student Clubs/Student Government Association

titanconnect.spcollege.edu
Search for Titan Connect Events by Presence, Inc.
spcollege.edu/student-life-leadership

CAMPUS HELP – Student Life & Leadership Coordinators

AC	Barbara Weaver	727-341-3645
CL	Stephanie Henningsen	727-791-2623
HEC	Anjum Perfetti	727-341-4480
DT	Jason Nicholson	727-614-7209
MT	Jason Nicholson	727-614-7209
SE	Anjum Perfetti	727-394-6036
SP/G	Barbara Weaver	727-341-3645
TS	Stephanie Henningsen	727-791-2623

Student Lounges

CL	ST 113
DT	2nd Floor DC 223
HEC	Room 176
MT	MTJC 339
SE	UP 192
SP/G	SS Building
TS	Agora Building

Student Photo ID

spcollege.edu/student-ID

ONLINE HELP

Contact us	studentidcard@spcollege.edu
How to get/use Student ID Card/Library Card	spcollege.edu/student-ID

CAMPUS LOCATIONS – Check website, or call for hours of operation.

AC	Main Building/AC 100	727-712-5843
CL	LI 207	727-791-2722
DT	Lobby near Parking Garage	727-241-4262
MT	MTJC 105A (Lobby) Student Services	727-341-7156
HEC	Library Room 191	727-341-3604
SE	UP 195 Student Activities Office	727-394-6036
SP/G	SU 203	727-341-3511
TP	Library Front Desk	727-712-5719

Student Support Programs – *Titans Care Centers* spcollege.edu/titans-care-resources

Brother-to-Brother – Antonio Seay	spcollege.edu/brother-to-brother	727-341-7947
F.A.A.M.E. – Antonio Seay	seay.antonio@spcollege.edu	727-341-7947
F.A.A.M.E. – North County	marshall.steve@spcollege.edu	
F.A.A.M.E. – South County	gant.marshall@spcollege.edu	
CCampus Childcare Assistance – Kelly Fried	spcollege.edu/childcare	727-341-3024
Center of Excellence – Nikishea Wright	spcollege.edu/center-of-excellence	727-398-8498
College Reach-Out Program CROP - Keisha Blue	spcollege.edu/crop	727-341-4376
Food Pantry	spcollege.edu/food-pantry	Call location near you
Mental Health Resources- Shanya Turner	spcollege.edu/counseling-services	727-341-3543
Student Support Services – A. Segura-Vargas	spcollege.edu/sss	727-341-4372
Summer of Success – A. Segura-Vargas	spcollege.edu/sos	727-341-4372
Technology Lending Program	spcollege.edu/technology-lending	
Titans UP – April Ross	spcollege.edu/titans-up	727-394-6160
Titans UP – Danice Sarcone	spcollege.edu/titans-up	727-394-6916
TRIO Education Opp. Center- Kelliann Ganoo	spcollege.edu/educational-opportunity-center	727-344-8058

Testing

spcollege.edu/testing

Coordinator, Sean Murren	727-341-3032	testing@spcollege.edu
--------------------------	--------------	--

CAMPUS LOCATIONS

CL	LA 100	727-791-2645
DT	DC 102	727-302-6637
HEC	Room 101 (limited test center)	727-341-4187
MT	MT-114	727-302-6637
SE	UP-105	727-394-6233

SP/G SU 122 727-341-3116
 TS AD-125 727-712-5238

Titan Connect

titanconnect.spcollege.edu

SPC Event App - Search for Titan Connect Events by Presence, Inc.

Transcripts – *See Admissions & Records*

spcollege.edu/transcripts

University Partnership Center

spcollege.edu/upc

727-394-6200

AVP Academic Affairs & Partnerships,
 Catherine Kennedy, SEM
 Administrative Services Specialist,
 Marina Laca, SEM PH 102

727-394-6200

727-394-6202 laca.marina@spcollege.edu

ONLINE HELP

Request Information
 Degrees by Discipline
 Degrees by Institution
 Bachelor's Degrees
 Graduate Degrees

stpe.co/upcinforequest
spcollege.edu/upc-degrees-by-discipline
spcollege.edu/upc-degrees-by-institution
spcollege.edu/upc-bachelors-degrees
spcollege.edu/upc-graduate-degrees

Veterans Services

spcollege.edu/veterans-services

727-341-7990

Coordinator, Alison Shenofsky
 Main line – Call for appts.

727-394-6204

727-341-7990 veteranservices@spcollege.edu

CAMPUS HELP

CL Jessica Stephens, SS102
 SE Joe Eisenhower, UP 179
 SP/G Audwin Scott, SU331

727-791-2767

727-394-6258

727-791-5282

Women on the Way

spcollege.edu/wow

727-791-2555

Coordinator, Shirley Crumbley

727-791-2555

womenontheway@spcollege.edu

CAMPUS HELP

CL Tara Allen, SS107
 SE Pepper Harth, UP115
 SP/G Bianca Cage, SU231

727-791-2634

727-341-4561

727-398-8468

Workforce Education

spcollege.edu/workforce

727-341-4445

Workforce, Community, and Corporate Partnerships Programs

Acting Dean, Belinthia Berry

727-341-4279

Sr. Administrative Assistant, Diane Salmon

727-341-3311

workforce@spcollege.edu

ONLINE HELP

Short-Term Training (STM)
 Browse Available Courses

spcollege.edu/workforce
spcollege.augusoft.net

CAREER AND ACADEMIC COMMUNITIES CONTACTS

spcollege.edu/degrees-training

Arts, Humanities, and Design

spcollege.edu/arts-humanities-design

Dean Barbara Hubbard	727-334-6011
Jonathan Barnes, CL	727-791-5997
Nathan Muehl, SP/G	727-341-4620
Patrick Hernly, SP/G	727-341-4364
Kevin Stanley, TS	727-712-5717

Business

spcollege.edu/business

Dean Emmanuel Hernandez-Agosto	727-341-7176
Mike Ewell	727-791-2610
Laura Malave, MT	727-341-4641
Michael Ewell, SP/G	727-791-2610
Patricia Hanrahan, TS	727-712-5230

Communications

spcollege.edu/communications

Dean Joseph Leopold	727-791-3719
Shirley Oakley, CL	727-791-5904
David Fitzgerald, SE	727-341-4736
Margie Wikoff, SP/G	727-341-4752
Laura Smith, TS	727-712-5795

Education

spcollege.edu/education

Dean Kimberly Hartman	727-712-5877
Educational Studies/EPI - Micheal Poulin, SP/G	727-791-7218
Teacher Certification/AS - Pam Wilkins, TS	727-712-5888
Teacher Certification/AS - Pat Roper, TS	727-712-5410

Engineering, Manufacturing, and Building Arts

spcollege.edu/engineering-manufacturing-building-arts

Dean Natavia Middleton	727-398-8288
Program Director - Sidney Martin, CL	727-394-6203

CAREER AND ACADEMIC COMMUNITIES CONTACTS

spcollege.edu/degrees-training

Health Sciences and Veterinary Technology

spcollege.edu/health-sciences-veterinary-technology

Health Sciences

Dean of Health Services/Sciences - Deanna Stentiford	727-341-4150
Dean of Nursing - Louisiana Louis	727-341-3472
Assistant Dean of Nursing - Clare Owen	727-497-5023
Funeral Services - Kevin Davis	727-341-3781
Emergency Medical Services - Ralph Sibbio	727-371-3726
Health Info Technology - Sheila Newberry	727-341-3623
Health Sciences/Services	727-341-4150
Nursing Bachelor's Degree	727-341-3622
Nursing Program Chairs	
Level 1 Anna Neuzil	727-341-3635
Level 2 Jacqueline Hawkins-Johnson	727-341-3650
Level 3 Amanda Daniels	727-341-3716
Level 4 Connie Lindmeier	727-398-8497
Orthotics and Prosthetics	727-341-4150
Physical Therapist Assistant - Kory Thomas	727-341-3612
Radiography - John Fleming	727-341-3758
Respiratory Care - Steve Hardt	727-341-3627
Surgical Services - Ashley Lake	727-614-7068

Veterinary Technology

	727-302-6720
Associate Dean Cynthia Grey	727-302-6724
Tricia Gorham	727-302-6733
Career & Academic Advisor AS Program - Cara Sebastian	727-341-3402
Career & Academic Advisor BAS Program - Pam Tsou	727-341-3082

Public Safety, Public Policy, Ethics, and Legal Studies

spcollege.edu/public-safety-public-policy-legal-studies

Dean Susan Demers	727-791-2501
-------------------	--------------

Legal Studies

Paralegal Studies - Christy Powers	727-791-5926
Paralegal Studies Dept. Offices - Elizabeth Bryson	727-614-7223

Public Safety, Public Policy, and Ethics

Bachelor's Public Safety Administration	727-398-4490
Bachelor's Public Policy/Admin. - Jeffery Kronschnabl	727-394-6205
Center for Public Safety Information - Eileen LaHaie	727-341-4502
Criminal Justice Lower Division - Mike Hughes	727-341-4146
Criminal Justice Indoor Range - Don Kiefhaber	727-341-4119
Criminal Justice Academies - Micheal Dibuono	727-614-7026
Emergency Medical Services - Ralph Sibbio	727-371-3726
Ethics - David Monroe, SP/G	727-341-4313
Ethics - Adeniji Odutola, TS	727-712-5812
Fire Academy - Robert Polk	727-302-6852
Training Center Director	727-614-7026

CAREER AND ACADEMIC COMMUNITIES CONTACTS

spcollege.edu/degrees-training

Science and Mathematics

spcollege.edu/science-mathematics

Science

Dean Natavia Middleton	727-398-8288
Bachelor's in Biology - Linda Gingerich, CL	727-791-2538
Tyrone Clinton, CL	727-791-2503
Stephen Andrasik, BP, DT, MT, SP/G	727-341-4275
Amanda Gilleland, SE	727-394-6024
Kelli Stickrath, TS	727-712-5835

Mathematics

Dean Jimmy Chang	727-341-4305
Joy Moore-Cruz, CL	727-791-2542
Hannah Johnson, DT/MT	727-791-2559
Daniel Bueller, SE	727-341-4221
Nydia Nelson SP/G	727-614-7274
Pelagia Kilgore, TS	727-398-8493

Social and Behavioral Sciences and Human Services

spcollege.edu/social-behavioral-sciences-human-services

Dean Joseph Smiley	727-712-5851
Human Services - Latresha Bigham-Moore, SP/G	727-497-5015
Social Sciences - Anja Norman, CL	727-791-2671
Social Sciences - Douglas Rivero, SE	727-394-6948
Social Sciences - Roberto Loureiro, SP/G	727-341-3556
Social Sciences - David Liebert, TS	727-712-5776

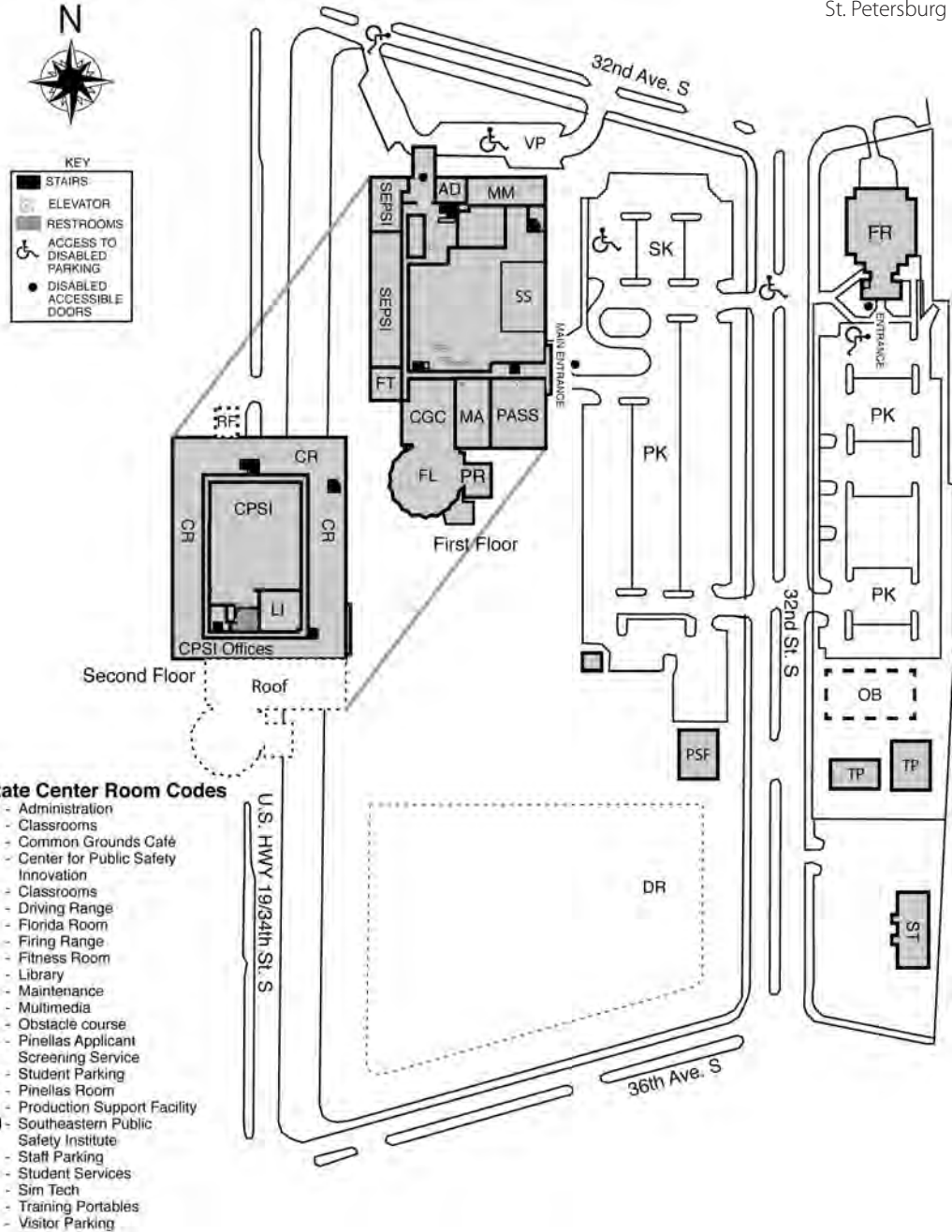
Technology

spcollege.edu/technology

Dean TBD	
Bachelor's Programs - John Long	727-341-4620
Chrissy Risberg, TS	727-712-5815
Dawn Ellis, DT	727-614-7025

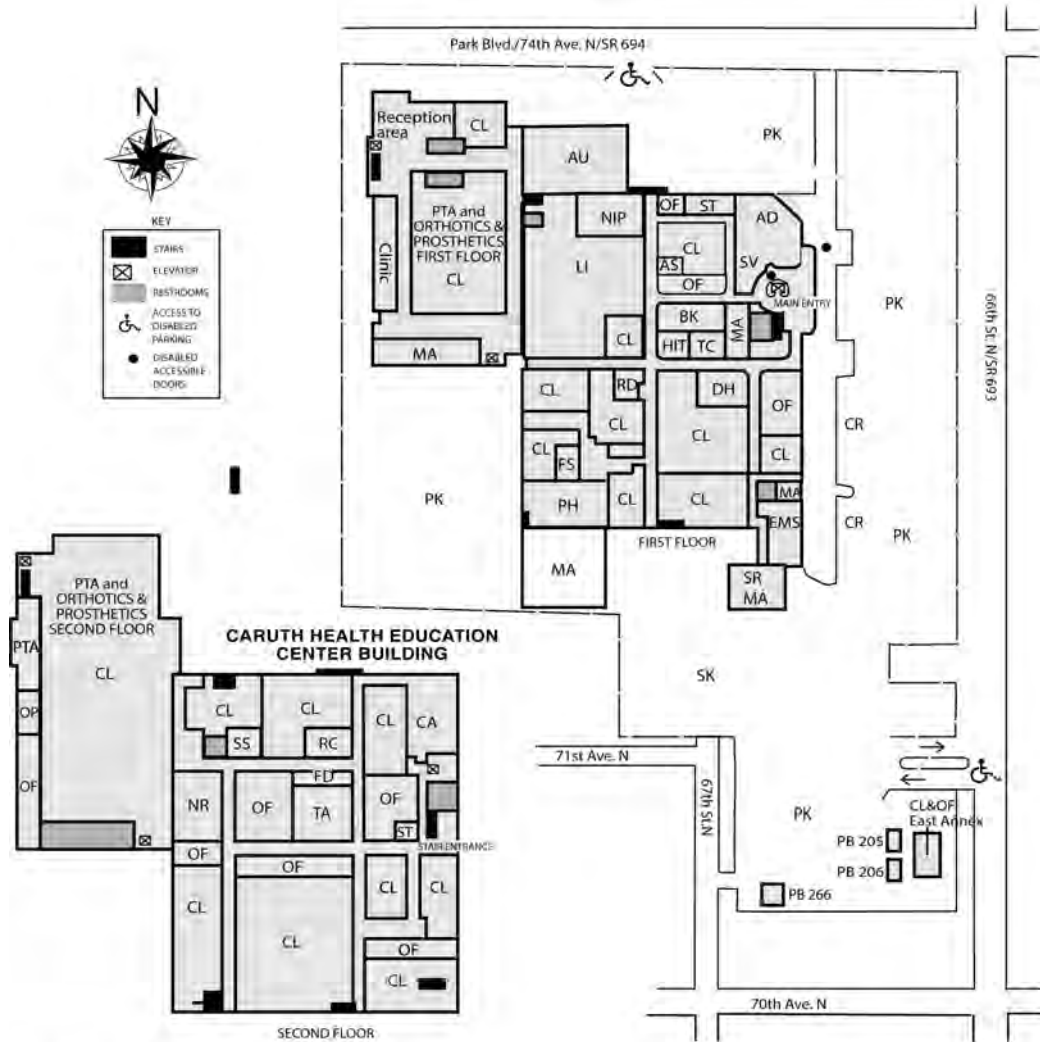
ALLSTATE CENTER

3200 34th St. S.
St. Petersburg



CARUTH HEALTH EDUCATION CENTER

7200 66th St. N.
Pinellas Park

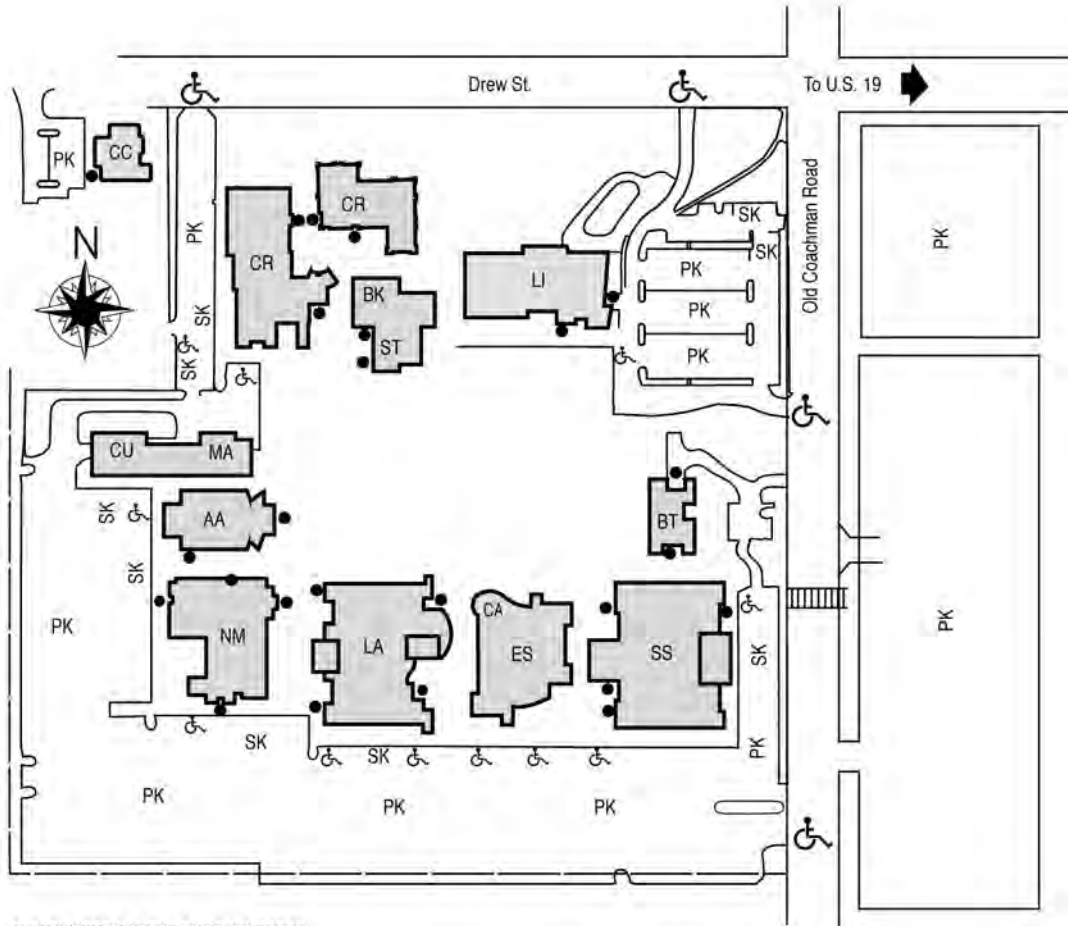


Caruth Health Education Center Room Codes

- | | | |
|--------------------------------------|------------------------------------|----------------------------------|
| AD - Administration | MA - Maintenance | SK - Staff parking |
| AS - Accessibility Services | NIP - New Initiative Program | SS - Surgical Services |
| AU - Auditorium | NR - Nursing | ST - Student Life and Leadership |
| BK - Bookstore | OF - Offices | SV - Student Services |
| CA - Cafeteria | OP - Orthotics & Prosthetics | TA - Teaching Auditorium |
| CL - Classrooms | PB - Portables 205, 206 & 266 | |
| CR - Clinic Parking | PH - Physical Plant/Receiving | |
| DH - Dental Hygiene | PK - Student parking | |
| EMS - Emergency Medical Services | PTA - Physical Therapist Assistant | |
| FS - Funeral Services | RC - Respiratory Therapy | |
| HIT - Health Information Technology | RD - Radiography | |
| HSA - Health Services Administration | | |
| LI - Library | | |

CLEARWATER CAMPUS

2465 Drew St.
Clearwater



CLEARWATER CAMPUS BUILDING CODES

AA - Arts Auditorium
 BK - Bookstore
 BT - Business Technologies
 CA - Cafe/Food services
 CR - Crossroads
 CC - Collaborative Center for Emerging Technologies
 CU - Central Utilities
 ES - Ethics
 • Social Sciences
 • College of Computer & Information Technology

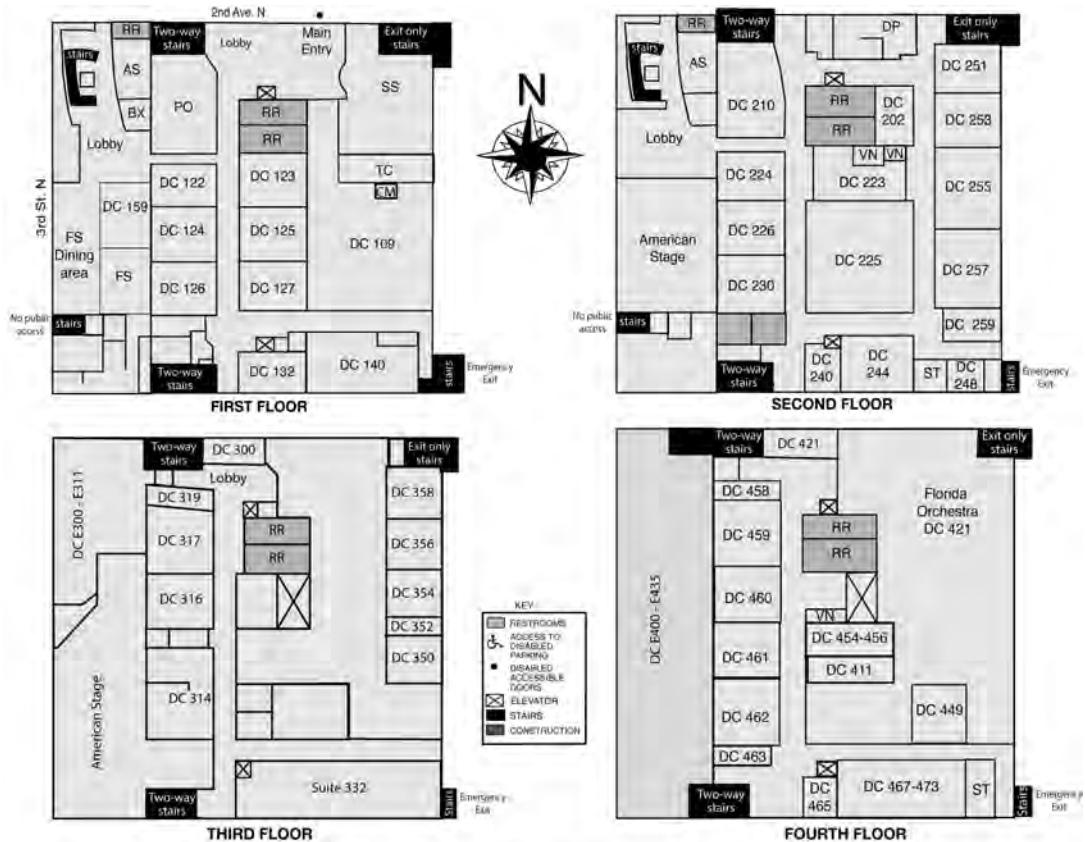
LA - Language Arts
 • Communication
 • Admissions
 • Advising
 • Financial Assistance Services
 • Business Office
 • Testing Center
 LJ - Michael M. Bennett Library
 • Learning Support Commons
 • Career Services
 MA - Maintenance

NM - Natural Science, Math and College of Education
 PK - Student parking
 SS - Social Sciences
 • Dual Enrollment
 • Veterans Services
 • Accessibility Services
 • Athletics
 • Baccalaureate Biology
 • Women on the Way Center
 SK - Staff parking
 ST - Student Life and Leadership



DOWNTOWN CENTER

244 Second Ave. N.
St. Petersburg



SPC Downtown Room Codes

Classrooms

- DC 122-127 - Classrooms
- DC 224 - Classroom
- DC 226, 230 - Classrooms
- DC 251 - Classroom
- DC 253 - Classroom
- DC 257 - Classroom
- DC 316-317 - Classrooms
- DC 460-461 - Classrooms

Numbered rooms

- DC 109 - Learning Center
- DC 140 - Facilities Receiving
- DC 202 - Conference room
- DC 210 - Community room
- DC 223 - Student lounge
- DC 225 - Student Life & Leadership, Student Government
- DC 240 - Science Prep
- DC 244 - Science Lab
- DC 248 - Staff offices
- DC 259 - Staff offices
- Suite 332 - American Stage offices
- DC 350, 354, 356 & 358 - Classrooms
- DC 411 - Lactation room
- DC 421 - Florida Orchestra
- DC 449 - Staff Wellness Center
- DC 458 & 463 - Science Prep
- DC 459 & 462 - Science Labs
- DC 465 - Technology Services (TS)
- DC 467-473 - Faculty Offices

Un-numbered rooms

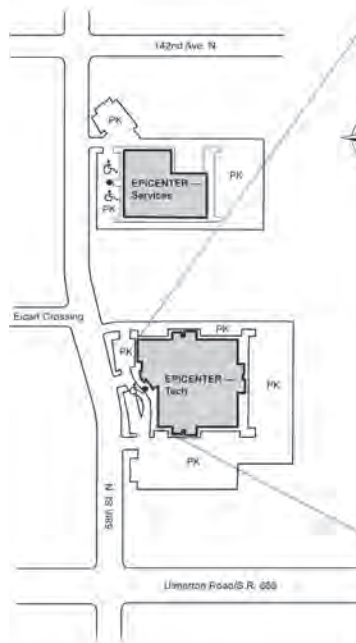
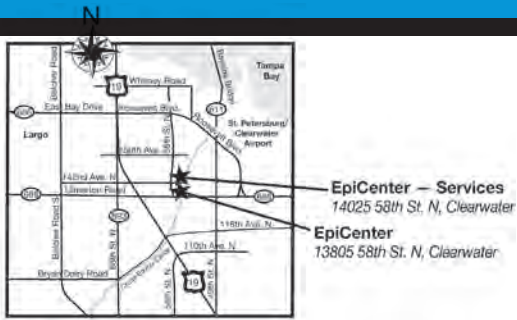
- AS - American Stage offices
- BX - Box office
- DP - Downtown Partnership offices
- CM - Copy machine
- FS - Food service (Nature's Table)
- PK - Student parking
- PO - Provost Office
- RR - Restroom
- SK - Staff parking
- SS - Student Services: Admissions, Advising, Business Office, Career Services, Accessibility Resources, Financial Aid, Registration, Veterans Services
- ST - Storage
- TC - Testing Center
- VN - Vending

SPC Downtown parking map

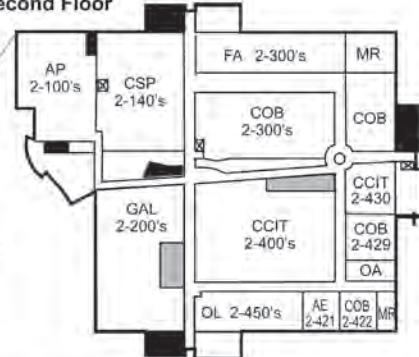


EPICENTER

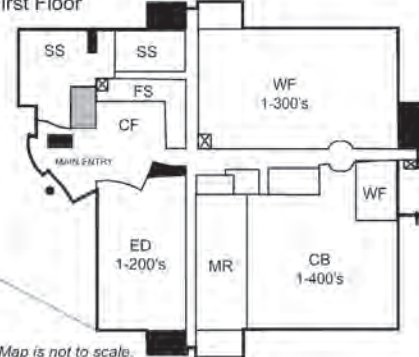
13805 58th St. N.
Clearwater



Second Floor



First Floor



Note: Map is not to scale.

KEY

- STAIRS
- ELEVATOR
- RESTROOMS
- ACCESS TO DISABLED PARKING
- DISABLED ACCESSIBLE DOORS

EpiCenter Room Codes

- AE - Academic Effectiveness
- AP - Academic Programs
- CB - Collaborative Labs
- CCIT - College of Computer and Information Technology
- CF - Cafeteria
- COB - College of Business
- CSP - CareerSource Pinellas (formerly WorkNet Pinellas)
- ED - Pinellas County Economic Development
- FA - Financial Aid
- FS - Food service
- GAL - Guardian ad Litem
- MR - Meeting rooms
- OA - Online Advising
- OL - Online Learning
- SS - Student Services
- WF - Workforce Institute

DOUGLAS L. JAMERSON, JR. MIDTOWN CENTER

1300 22nd St. S.
St. Petersburg

SPC Midtown Room Codes

- MT 104 - Facilities Services & Receiving
- MT 105 - Reception
- MT 106, 108-112 - Staff Offices
- MT 107 - Conference Room
- MT 113 - Staff Workroom
- MT 114 - Testing
- MT 115 - ADA Testing
- MT 118 - Security
- MT 120 - Library/Writing Studio
- MT 120A - Study Room
- MT 120B - Study Room
- MT 120C - Study Room
- MT 141 - Community Room
- MT 150 - Deuces Lounge

- MT 204 - Computer Lab
- MT 205 - Computer Lab
- MT 206 - Math Studio
- MT 207 - Classroom
- MT 210 - Learning Support Center
- MT 217 - Classroom
- MT 219 - Classroom
- MT 225 - Computer Lab
- MT 234 - Science Studio
- MT 236 - Classroom

- MT 305 - Reception
- MT 306 - Conference Room
- MT 307-317 - Faculty Offices
- MT 318 - Adjunct Faculty
- MT 320 - Technology Resources
- MT 321 - Staff Workroom
- MT 322 - Computer Lab
- MT 324 - Biology Lab
- MT 328 - Science Prep
- MT 330 - Physical Science Lab
- MT 332 - Classroom
- MT 339 - Student Workroom
- MT 339B - Student Government



FIRST FLOOR



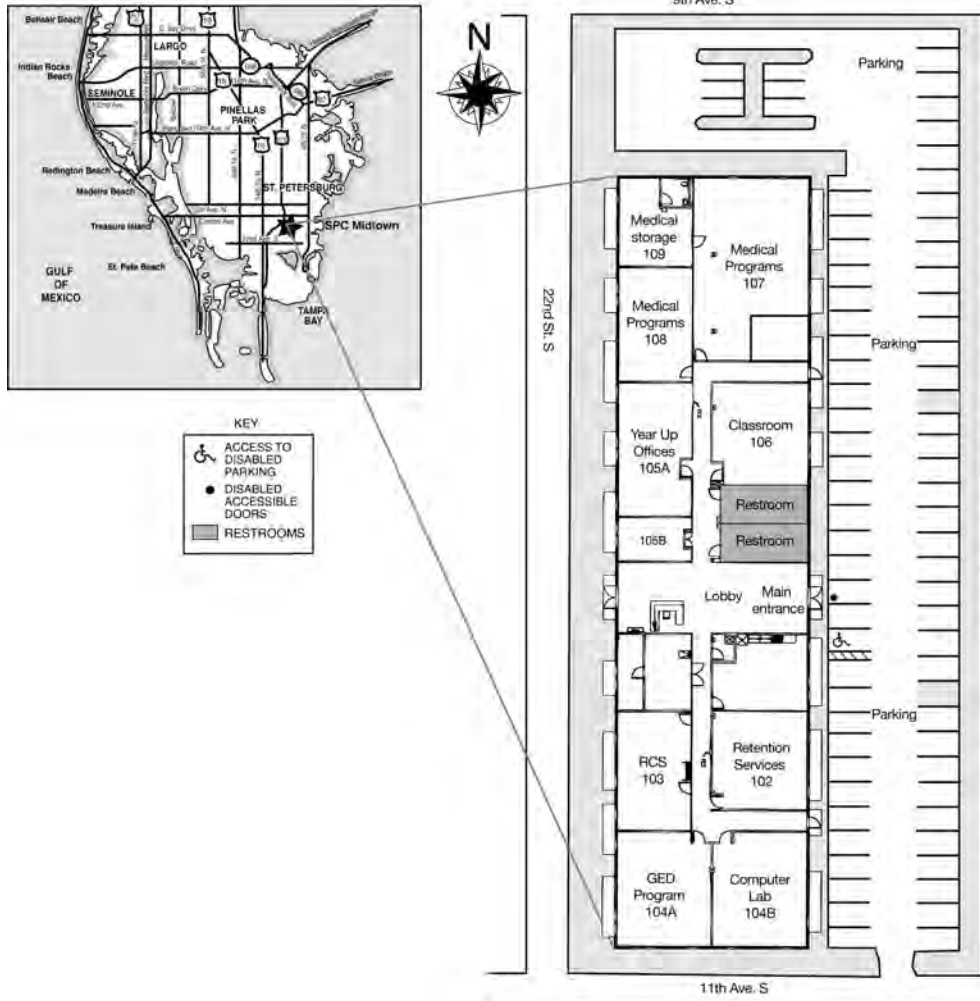
SECOND FLOOR



THIRD FLOOR

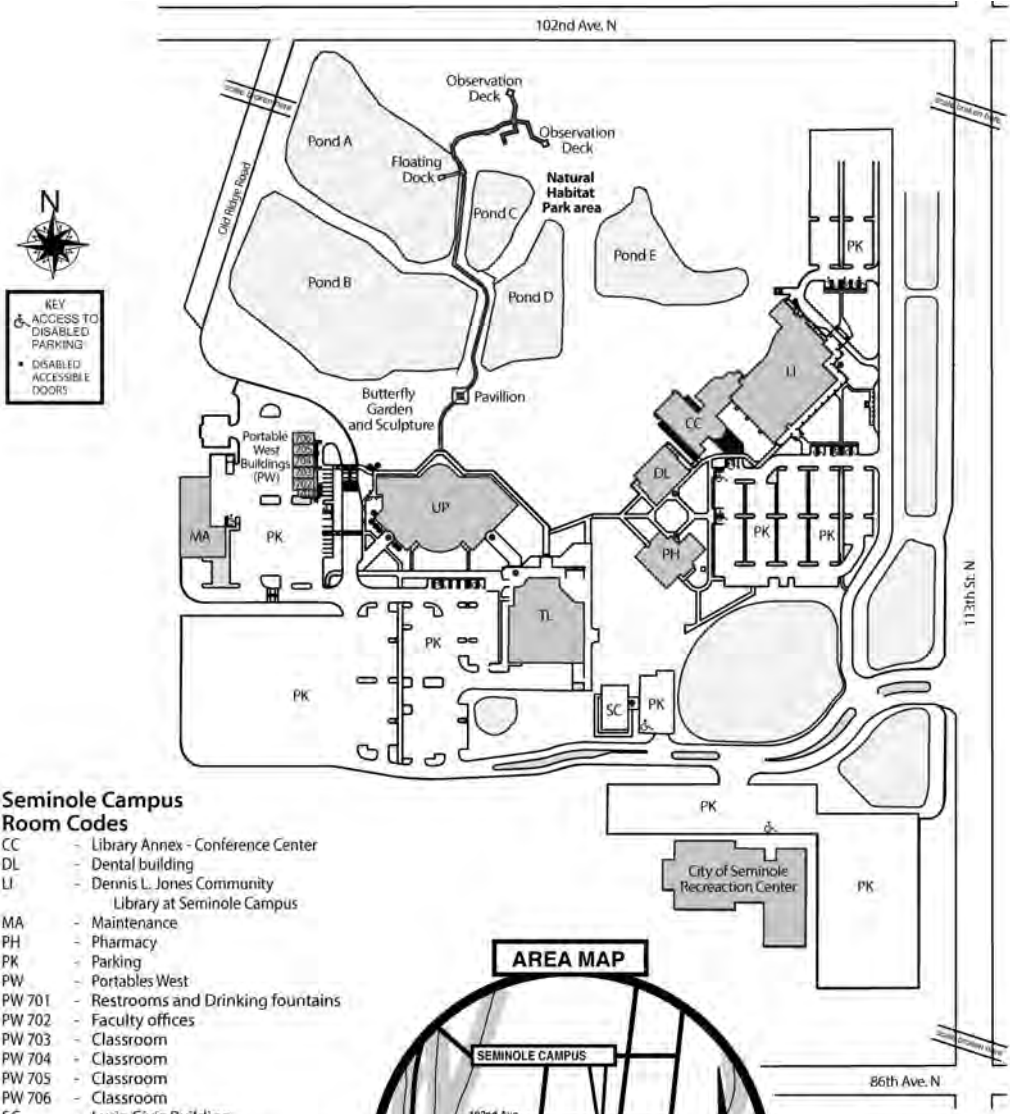
CECIL B. KEENE, SR. STUDENT ACHIEVEMENT CENTER

1048 22nd St. S.
St. Petersburg



SEMINOLE CAMPUS

9200 113th St. N.
Seminole



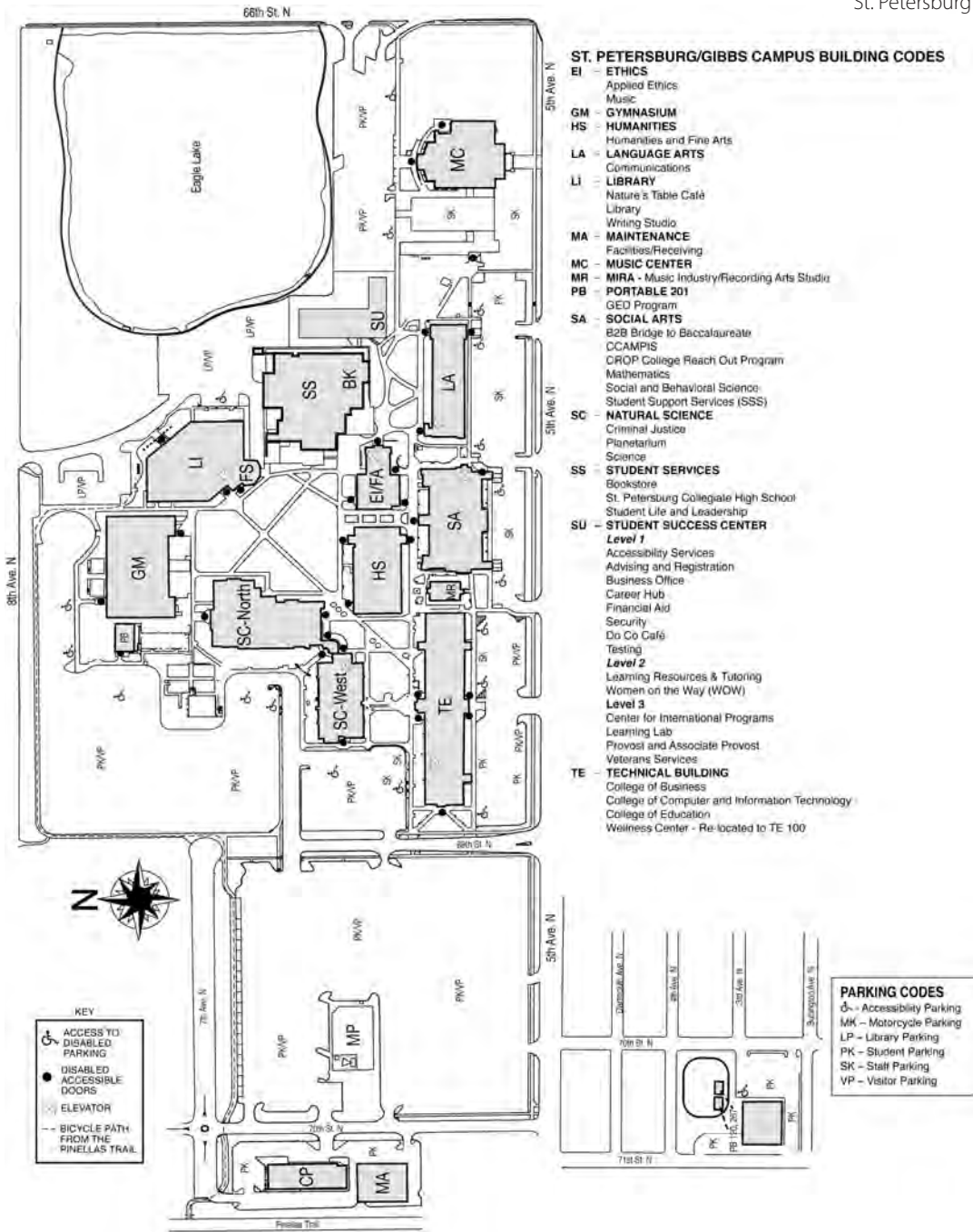
Seminole Campus Room Codes

- CC - Library Annex - Conference Center
- DL - Dental building
- LI - Dennis L. Jones Community Library at Seminole Campus
- MA - Maintenance
- PH - Pharmacy
- PK - Parking
- PW - Portables West
- PW 701 - Restrooms and Drinking fountains
- PW 702 - Faculty offices
- PW 703 - Classroom
- PW 704 - Classroom
- PW 705 - Classroom
- PW 706 - Classroom
- SC - Lurie Civic Building
Seminole Chamber of Commerce
- TL - Technology Learning
- UP - C.W. Bill Young University Partnership Center building
Veteran Services



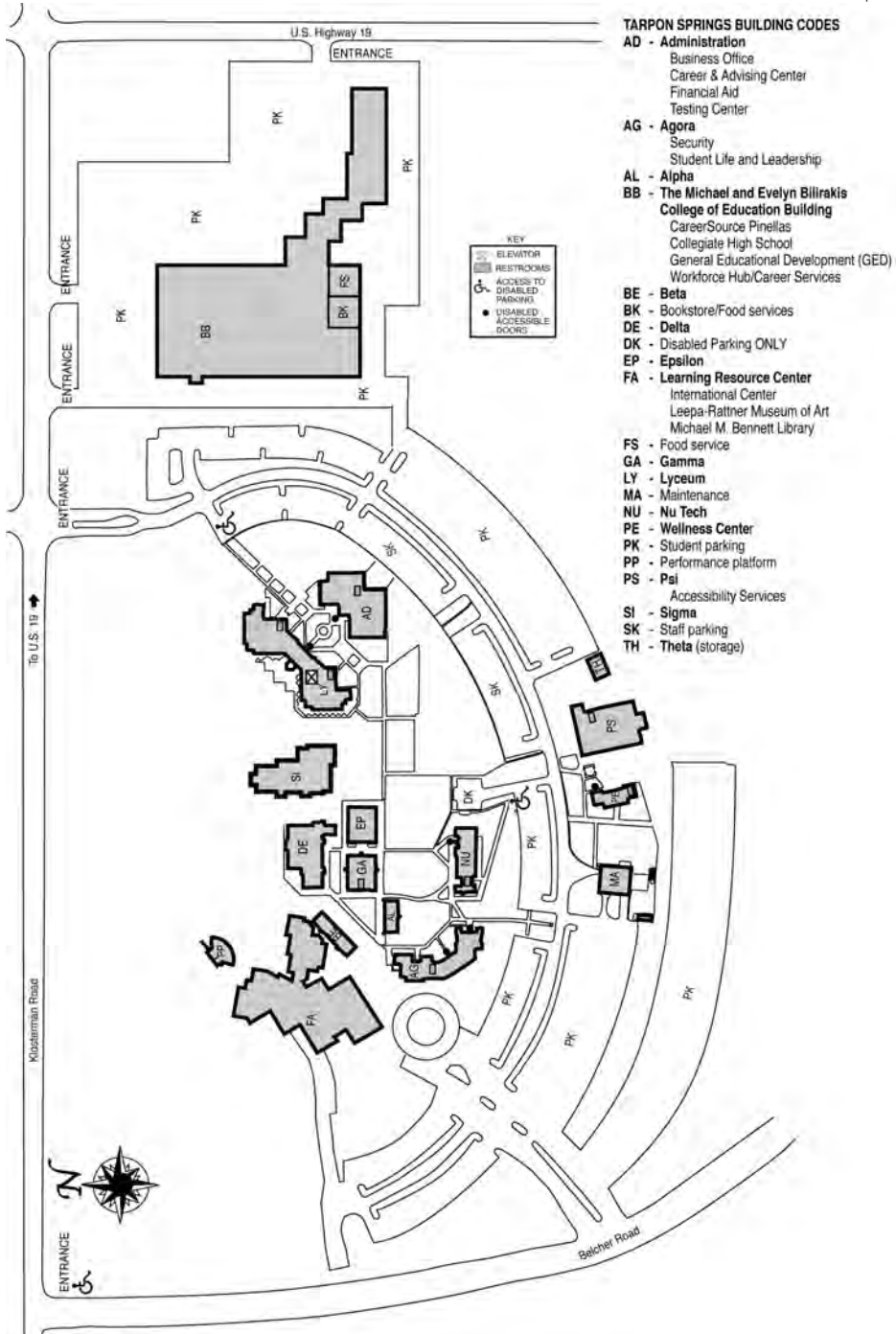
ST. PETERSBURG/GIBBS CAMPUS

6605 Fifth Ave. N.
St. Petersburg



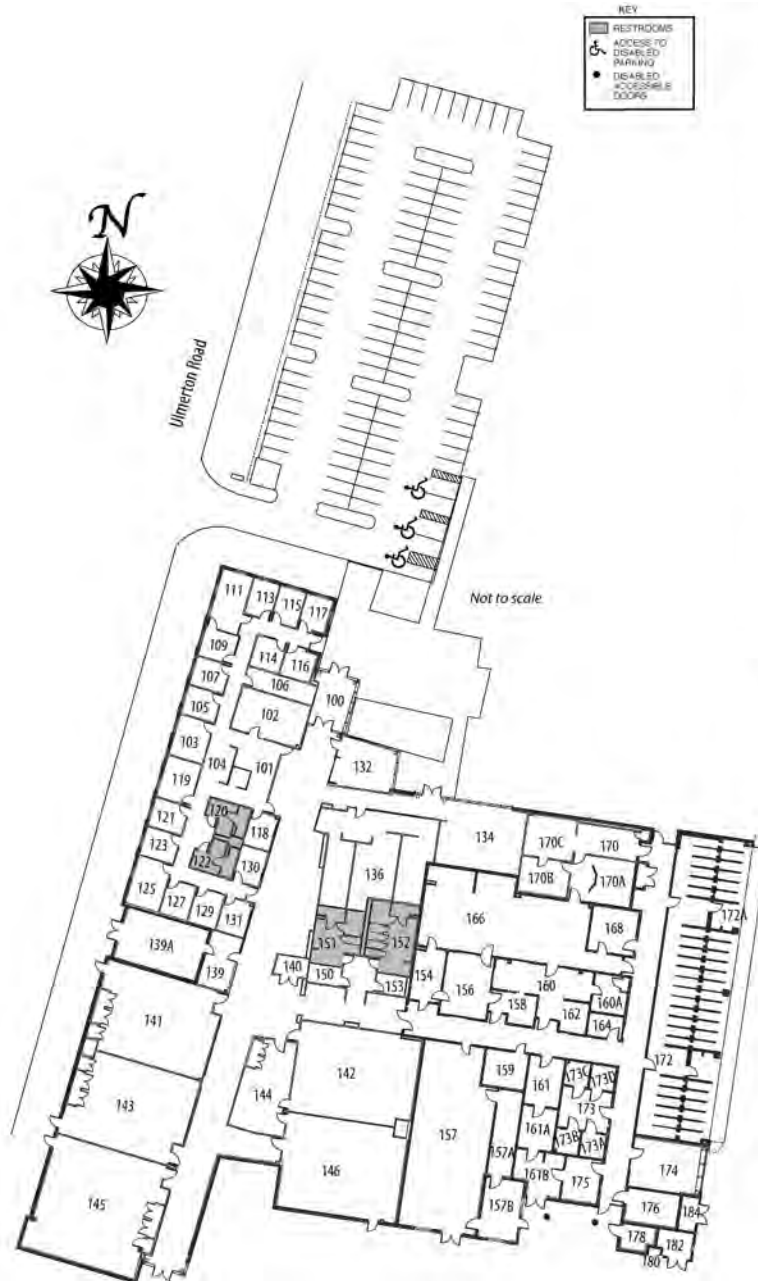
TARPON SPRINGS CAMPUS

600 E. Klosterman Rd.
Tarpon Springs



VETERINARY TECHNOLOGY CENTER

12376 Ulmerton Rd.
Largo



SPC Veterinary Technology Center Room Codes

- 100 - 119 - TBA
- 120, 122 - Restrooms
- 121 - 132 - TBA
- 134 - Student Work
- 136 - 139 - TBA
- 139A - Mechanical
- 140 - Electrical
- 141, 143 - Computer Lab
- 142 - Anatomy Lab
- 144 - Lab Storage
- 145 - Collaborative Lab
- 146 - Pathology Lab
- 150 - Custodial
- 151 - 152 - Restrooms
- 153 - Computer
- 154 - Scrub
- 156 - Surgery
- 157 - Mechanical
- 157A - Electrical
- 157B - Generator
- 158 - Recovery
- 159 - Telecommunications
- 160 - Control
- 160A - Pharmacy
- 161 - Food Prep
- 161A - Food Storage
- 161B - Storage
- 162 - Bath
- 164 - Avary
- 166 - Animal Procedures Lab
- 168 - Lab Prep
- 170 - Radiology
- 172 - Dog Ward
- 173 - Lab Animals
- 174 - Cat Ward
- 175 - Isolation
- 176 - Custodial
- 178, 182 - Storage
- 180 - Oxygen
- 184 - Mechanical

Take your education to a new level

St. Petersburg College offers many options to meet your education needs. Consider your career goals and start planning your path today. Visit spcollege.edu/degrees-training for more information, and browse by areas of study in one of our 10 Academic Communities or by degree options.



Academic Calendar

There are many dates that are important for you to know, such as when classes begin, deadlines for withdrawing, dates of college holidays, and final exam schedules, to name a few. For the most up-to-date information, visit the online Academic Calendar at spcollege.edu/calendar.

Career and Academic Advising

Career and Academic Advisors will help you get started by discussing your career and educational goals and will be available to guide you throughout your entire SPC experience. At SPC, advisors can help you with registration, course planning, scheduling, degree program exploration, transfer information and registration holds, and so much more!

We encourage students to meet with their assigned advisor. They are experts in your selected Career and Academic Community. To find your advisor, visit MySPC. Then, click on the My Academics tile and look for My Advisor in the navigation bar. If you have an assigned advisor, you will be able to link to the advisor's webpage for their contact information and schedule an appointment.

Have a quick question? Login to our Virtual Advising Center or walk-in on campus for assistance.

Check out all the ways to connect with an advisor by visiting spcollege.edu/advising.

Accelerated Credit Options

SPC wants to help you finish your degree. You may bring in up to 45 college credits through your life experience, military training, industry certification, test credit, and articulation agreements recognized by the college. Check with your advisor to learn more about each of these options.

Visit spcollege.edu/earn-free-college-credit

Center for International Programs

The Center for International Programs (CIP) offers students international opportunities around the world, as well as across the college and community.

- **Study Abroad**

Studying abroad is one of the most important experiences you can have. The experience allows for personal growth by changing perspectives and inviting tolerance for different cultures and peoples. It also provides you with the necessary skills to be competent global citizens in the 21st Century. Travel and earn college credit through numerous study abroad programs available through SPC and other colleges, universities, and organizations. Scholarships are available.

Visit stpe.co/studyabroad.

- **International Events**

You don't have to get on a plane to experience diverse cultures – they are all around us! CIP offers activities on and off campus that will transport students to another culture. For on-campus activities, see our International Events Calendar. For off-campus opportunities, see our GoGlobal Calendar!

Think Global; Act Local.

Both of these calendars can be found at spcollege.edu/international-programs.

- **Global Citizen Program**

The Global Citizen Program (GCP) is designed to provide students with the knowledge, skills, and attitudes of a competent global citizen who is ready to live and work in a diverse world. The GCP entails curricular and extracurricular components that students complete alongside degree programs.

Get an edge up as you prepare to work in a diverse and global workforce! Visit spcollege.edu/international-programs.

- **International Student Services**

International students bring intellectual and cultural diversity to our campuses. Students from around the world make SPC their home and provide opportunities for students, faculty, and staff to hear varying perspectives in the classroom and beyond. CIP supports international students to help them succeed academically and become integrated into campus life. Visit spcollege.edu/international-programs.

Computer Labs

Computer labs are available on campuses to meet your academic technology needs. Computers include Microsoft Office and other productivity software. You must have a valid student ID, and, in most cases, an SPC student username and password to log on to a computer. You should also use a flash drive or cloud-based account to save your work. Find out more about locations and hours at spcollege.edu/computer-labs.

Enrollment Verifications

An enrollment verification is an official document verifying your enrollment status, attendance dates, and good academic standing. You can obtain up-to-date information on your enrollment status and student loan notices online in the MySPC portal.

You can:

- Download and print enrollment verification certificates to provide to third parties
- Find out when deferment notices were sent to your student lenders
- View your enrollment history
- View proofs of enrollment sent on your behalf to student service providers
- Get a list of your student loan holders
- Print good student discount certificates

To access the National Student Clearinghouse:

- Log into your MySPC portal
- Choose My Status
- Choose My Academic Status
- Select the Enrollment Verification option from the left hand menu

Excess Hours Advisory Statement

Section 1009.286, Florida Statutes, establishes an "excess hour" surcharge for a student seeking a baccalaureate degree at a state university. It is critical that students, including those entering Florida colleges, are aware of the potential for additional course fees. "Excess hours" are defined as hours that go beyond 120% of the hours required for a baccalaureate degree program. For example, if the length of the program is 120 credit hours, the student may be subject to an excess hour surcharge for any credits attempted beyond 144 credit hours (120% x 120).

All students whose educational plan may include earning a baccalaureate degree should make every effort to enroll in and successfully complete those courses that are required for their intended major on their first attempt. Florida college students intending to transfer to a state university should identify a major or "transfer program" early and be advised of admission requirements for that program, including the approved common prerequisites. Course withdrawals and/or repeats, as well as enrollment in courses nonessential to the intended major, may contribute to a potential excess hours surcharge.

FloridaShines

FloridaShines offers an array of FREE online tools and resources designed to help students succeed in school, earn a college degree, and embark on a rewarding career. Sponsored by the Florida Department of Education, FloridaShines is also the website where SPC students may apply to be transient students at another Florida public college or university. Visit floridashines.org.

Free Tutoring and Classroom Support

The Learning Centers provide free on-site and online tutoring for writing, math, and science courses taught at SPC as well as computer assistance to help with software-enhanced coursework and/or basic computer applications.

Tutor.com, a 24/7, on-demand service is available for free through MyCourses. Plus, the Virtual Learning Commons in MyCourses offers a number of self-learning toolkits and resources. All of this support is available whether you are doing well in a class or just need some extra assistance. Visit spcollege.edu/tutoring.

Health Program Tutoring/New Initiative Program (NIP)

The New Initiative Program/Learning Support Center provides free tutoring to pre-health and health education students. Visit spcollege.edu/new-initiative-program.

Honors Program

St. Petersburg College's Honors Program provides an exemplary education and an intellectual learning community that encourages our most talented and motivated students in creative and critical thinking and developing research and leadership skills. Consider enrolling in honors classes if you:

- Are a motivated student with a good academic record (3.5 GPA, score of 120 on the reading and writing sections of college placement test)
- Want to take academically challenging classes with other highly motivated students
- Want an honors distinction on your transcript

Honors scholarships are available for qualified applicants. Visit spcollege.edu/honors-program.

Learning Plan Tool

SPC has an online planning tool to help you automate picking classes that meet your degree requirements. By using the planner tool, sometimes referred to as MyLearningPlan, you will stay on track with your degree requirements. Explore our step-by-step tutorials to learn more. Visit stpe.co/videotutorial.

Library

Visit your campus library for resources, research and writing assistance, wireless access, study spaces, cloud-based copiers/printers, and technology use. You can check out materials or use any of the services our campus libraries provide by using your student ID. You can also use our online library and Ask A Librarian services to perform research or request assistance at your convenience. Plus, our partnership libraries on the Clearwater, St. Petersburg/Gibbs, and Seminole campuses offer the benefits of a public library and college library, all in one. Visit spcollege.edu/campus-libraries.

MyCourses Learning Management System

MyCourses is the learning management system used at SPC to help facilitate all online, live online, and hybrid/blended courses as well as the college's web-enhanced courses offered in a face-to-face environment. MyCourses is a convenient online system that provides you with many opportunities to interact with course materials as well as communicate with instructors and classmates from any device that has an Internet connection. To access MyCourses, visit spcollege.edu and click on "Titans Login." Use your student email address and password to log in, then click on the MyCourses tile. Courses in which you are enrolled will appear on the left side of the page. A calendar with important course dates is in the center column. Also available in MyCourses is the "Introduction to MyCourses" course. The goal of this course is to provide you with an overview of the MyCourses environment as well as give students a chance to interact with some of its most commonly used tools. The course consists of eleven modules and each one covers a specific topic related to student success and using online learning tools.

Online Classes

SPC offers a robust selection of online college courses and fully online programs. Most SPC programs can be completed 100% online. Online students have access to all student support services and the opportunity to participate in college activities either on-campus or from a distance. Learn more about becoming an online student at spcollege.edu/online.

Testing

Taking a College Placement Test (CPT) helps determine what reading, English, and math courses you should register for at SPC. This is not a pass/fail test. Test scores are used to help you decide what level classes you should start with to help you be more successful. SAT and ACT test scores may be used in lieu of the CPT.

The CPT is required unless you entered ninth grade in a Florida public school in the 2003-04 school year or later and graduated from a Florida public high school with a standard high school diploma or serve as an active duty member of the United States military. The college offers college placement tests (PERT, Accuplacer) free of charge for all incoming students. For testing locations and hours, including distance testing, as well as test preparation resources and more, visit spcollege.edu/testing.

Transient Students

At SPC, there are two types of transient students. The first type is an SPC student who wishes to remain degree-seeking at SPC but take a class at another college or university to accelerate degree completion. The second type is a student who is degree-seeking at another institution but wishes to take one or more classes at SPC. Information on both types of transient students and requirements and procedures for approval can be found at spcollege.edu/transient-students.

Transcripts

Your SPC transcript is the official, permanent academic record that includes the classes you have taken, grades earned for each class, honors, and degrees completed. Official transcripts may be ordered by logging into your MySPC account. Visit spcollege.edu/transcripts.

Transferring to SPC

If you attended another college or university and want to attend SPC, you are considered a transfer student. To be admitted to SPC, you will need to submit official transcripts from every regionally accredited college that you've attended. It's very important that SPC receives all of your official transcripts within your first term of admission or re-admission, as it may impact your ability to enroll for subsequent terms. Students enrolled in a degree-seeking program will have a one-term grace period to submit all official transcripts. Giving your complete educational history to SPC allows you to:

- Receive credit for your previous work
- Minimize the potential for repeating courses at SPC that you already successfully completed elsewhere
- Simplify the registration process
- Save you time and money

Please note that limited-access programs may require receipt of all official transcripts for program admission, regardless of accreditation type.



Academic Policies

College Preparatory Courses

If your test scores indicate that some review is needed, you may be required to take college preparatory classes that do not count toward your degree. These courses teach skills in academic fundamentals, so you'll be ready to meet the challenge of college-level course work. Students who need college preparatory courses are required to take a College Success Skills course. Free tutoring also is available in the Learning Centers at each campus. For students who do not have SAT or ACT scores, the college offers placement tests (PERT, Accuplacer) free of charge.

If you entered ninth grade in a Florida public school in the 2003-04 school year or later and graduated from a Florida public high school with a standard high school diploma or serve as an active duty member of the United States military, then you have choices regarding college preparatory courses. Depending on your decision, you may choose to quickly complete one to two credit courses that target specific areas for improvement, take free work-at-your-own-pace classes to get ready for college-level math, reading and writing, or enroll directly into college-level classes. Our Advising Centers can provide a quick assessment to help you decide what is right for you.

Common Prerequisites

If you plan to enroll in an upper-division program at SPC or transfer to an upper-division program at a state university in Florida, you will need to complete the state mandated prerequisites required for your major as part of your Associate in Arts (A.A.) degree. This means you will not have to take one set of courses to qualify for admission to one university and another set of courses for another university. Limited-enrollment programs may have GPA requirements, but course requirements will be the same across Florida institutions. You can find the requirements for about 250 university majors and track your progress toward completion through the A.A. transfer evaluation tool on the FloridaShines website at floridashines.org.

Academic Appeals

Before lodging a grievance or appeal, you are encouraged to seek an informal resolution with the employee in the department or course faculty directly responsible for the service or department of instruction. If the matter is not resolved during the informal process, you may file a formal grievance or appeal using the appropriate steps provided at spcollege.edu/appeals. When submitting a grievance or appeal, please provide as much information and documentation as possible. For detailed information see Board of Trustees' procedure P6Hx23-4.36 (Student Grievances and Appeals), P6Hx23-4.46 (Program-Based Good Academic Standing, Academic Warning, Probation, Suspension, and Dismissal), and P6Hx23-4.461 (Academic Affairs: Academic Honesty Policies). Visit web.spcollege.edu/botrules for more information.

Academic Honesty Policy

SPC expects you to be honest in all of your academic work. By enrolling at the college, you agree to adhere to high standards of academic honesty and integrity and understand that failure to comply with this pledge may result in academic and disciplinary action, up to and including expulsion from the college. As a member of the college community, you also have an ethical obligation to report violations of the SPC academic honesty policies you may witness. Visit spcollege.edu/student-rights.

Academic Standing Policy

Good academic performance and a clear path to the finish are keys to your success at SPC. These policies, which apply to all students, have been put in place to help you stay focused on your goal and get you back on track if you falter. All degree-seeking students enrolled at SPC must adhere to the Academic Standing Policy. Visit spcollege.edu/student-rights.

Course Load

The maximum course load is 18 credit hours in regular Fall and Spring terms and 12 credit hours in the Express and Summer terms. SPC has developed the Credit Hour Commitment Model to help you determine the appropriate course load for each term. For every one credit hour enrolled, 48 hours of time should be committed. This commitment includes both time spent in class as well as time spent completing assignments and preparing for coursework. For example, a 16-week three credit hour class would require 144 total hours of commitment or nine hours for each of those 16 weeks. Classes that meet for less than 16 weeks will require larger weekly time commitments. Please see the table below. You should consider work, family, and other responsibilities when determining the appropriate course load.

Session Type	Credit Hours	Total Hour Commitment	Weekly Commitment
16-week	3	144	9 hours
10-week	3	144	14.4 hours
8-week	3	144	18 hours
5-week	3	144	28.8 hours

Repeat Policy for College Credit Courses

You may repeat a course once for which a grade of "C" or higher has been earned. Retaking the course may be allowed if it is required for: (1) teacher recertification, (2) specifications of a regulatory agency, (3) licensure, (4) program requirements, or (5) it is to replace credit earned through examination, i.e. AP, IB scores. Repeating a course to meet program requirements must be for either the purpose of improving the grade to be considered for admission to a specific program or a significant length of time has elapsed since the course was originally taken and you need to update your knowledge to meet current program requirements. Under this provision, the highest grade earned will be used in computing the average GPA.

You may request to repeat a course following the appropriate steps at spcollege.edu/student-rights. See BOT Procedure P6Hx23-4.15 at web.spcollege.edu/botrules (Sec. I).

When you attempt a course for the third or more time, you will pay the full cost of instruction (defined as the out-of-state tuition and fees rate). You may appeal the full cost provision on the basis of extenuating circumstances and on an individual basis related to financial hardship.

You may file an appeal using the appropriate steps provided at spcollege.edu/appeals. Be advised that on the third attempt, students MAY NOT receive a grade of "I," "W," or "X," but must receive the letter grade earned. See BOT Procedure P6Hx23-4.15 on web.spcollege.edu/botrules (Sec. II).

Incomplete Policy

If you are given an incomplete (I) you will have until the end of the next full 16-week term to complete the remaining requirements and receive a permanent grade, or the grade will convert to an "F." This means if you receive an incomplete at the end of Term I, you must complete the remainder of the course work by the end of Term II. The only exception to the time frame is for an "I" granted at the end of Term II. In that instance, you would have until the end of the next 16-week term, which would be Term I of the next academic year. See BOT Procedure P6Hx23-4.15 at web.spcollege.edu/botrules (Sec. IV).

Voluntary Audit/Withdrawal Policy

You must choose the option to audit a course before the end of the drop/add registration period. You may elect to withdraw voluntarily from a course through the last day to withdraw with a final grade of "W." These dates are listed in the academic calendar on the college's website. If you voluntarily withdraw after the last day to withdraw, you will receive a grade of "WF."

If you are a financial aid recipient and are thinking about dropping classes, please consult an advisor to make sure you understand the academic and financial consequences.

Visit spcollege.edu/student-rights.

Register for classes 24/7

Registering for classes online is easier than ever. Make sure to connect with an advisor, preferably your assigned advisor, to ensure your learning plan is up to date. Your approved learning plan will speed up the registration process and help take the guesswork of deciding what courses to take for your program. To register for classes online, log in to MySPC and:

- Check your To-Do List and view holds that might prevent registration
- Check your financial aid status
- Check your student email
- Register for classes

Register as early as possible to get the best schedule. Visit spcollege.edu/calendar for registration dates.

Need Help?

Tuition*

Lower division courses

In-state, per credit hour	\$111.75
Out-of-state, per credit hour.....	\$386.90

Upper division courses

In-state, per credit hour	\$122.70
Out-of-state, per credit hour.....	\$425.79

In addition, an Access fee of \$3 per credit hour will be assessed.

* Tuition and fees are subject to change. The most recent rates are posted at spcollege.edu/tuition.

Paying your tuition

Paying your tuition is the last step in registration. It is important that you pay your fees by the due date listed on your fee schedule to avoid being dropped from your classes. Log in to MySPC for your due date and payment amount. Select the My Account tile for additional information and payment options.

- **Residency for Tuition Purposes**
The amount of tuition you pay is based on in-state and out-of-state fees. To be considered for in-state fees, you must submit specific documentation by the first day of classes. Learn more at spcollege.edu/residency. If you have specific questions about residency, contact residencyquestions@spcollege.edu.
- **How to pay tuition**
You can pay your tuition online or on campus by visiting spcollege.edu/tuition. If you decide to pay online, please use a browser other than Safari, as this browser is not compatible for online payments.

- **Tuition Payment Plan**

SPC offers an interest-free tuition payment plan that is affordable and convenient. To use this payment plan, you pay a percentage up front and an enrollment fee of \$30-\$40, depending on when you apply. Visit spcollege.edu/payment-plan.

- **Florida PrePaid Tuition Plan**

SPC accepts Florida PrePaid (FPP) college funds. SPC students are no longer required to request that FPP be processed. Please allow one business day after registering for classes for your FPP to be processed and to check your balance due. Visit spcollege.edu/florida-prepaid.

- **Refund Policy**

Review details on SPC's refund policy at spcollege.edu/tuition-refunds.

Financial aid

Get details at spcollege.edu/financial-aid, and read more later in this section..

After You Register (new students)

- **Review your To-Do List**

It is important to log in to MySPC to review items that require your attention. These items are commonly referred to as your "To-Do List" and you will also be able to see any communications that SPC has sent to you. Completing your To-Do List items in a timely manner will expedite your becoming fully degree-seeking and will help determine your eligibility for financial aid.

- **Get your Student ID**

Visit spcollege.edu/student-ID and follow the steps to obtain your ID card online or on campus. Your ID card allows you to check out library materials, attend student events, use computer labs, and use campus wellness centers. You can also enjoy free PSTA bus service with your SPC student ID card.

- **Activate your refund preference**

If you are 16 years old as of the first day of classes and enrolled in at least one credit hour, you will receive any refund package from BankMobile. Using your refund code, you will be able to set up a refund option with BankMobile for excess financial aid and tuition refunds. For additional information, go to spcollege.edu/bankmobile.

Athletics

SPC has high-quality intercollegiate athletic teams that compete for conference, state, and national championships in women's softball, tennis, volleyball, basketball, and in men's baseball and basketball. Our teams compete in Region VIII of the National Junior College Athletics Association (NJCAA). For more information, visit athletics.spcollege.edu.

Bulletin Boards

If you have an event you'd like to promote or an item or service you'd like to sell, contact the campus Student Life and Leadership office for approval to post notices on each site's general-interest bulletin boards. The college reserves the right to restrict commercial postings. Visit spcollege.edu/student-life-leadership.

Clubs and Organizations

Student clubs and organizations are a great way to get involved. SPC has a variety of academic clubs, musical ensembles, and special interest clubs. You can also get involved in your campus Student Government Association. Visit spcollege.edu/student-life-leadership.

Event Calendar

The college offers a wide variety of events on campus, online, and in the local community throughout the year. Students can attend shows and exhibits at the Palladium Theatre, the Leepa-Rattner Museum of Arts, as well as productions by our Performing Arts program students. Stay in virtual touch with your campus community and join us for a variety of seminars, workshops, and even trivia nights! Find out more about upcoming events by using TitanConnect at titanconnect.spcollege.edu or download the app by searching for TitanConnect events hosted by Presence, Inc.

Student Lounges

Most campuses have a student lounge where students can relax, study, watch TV, play pool, table tennis, and other games.

Get connected: Connect with SPC online to keep up with college news, events, and more. You can find all of SPC's social media accounts at spcollege.edu/social-media.

Student Publications

Explore SPC publications at spcollege.edu/social-media. The official student newspaper of SPC is available at Sandbox.spcollege.edu.

Student Recreational Activities

SPC sponsors many intramural and recreational activities that provide friendly, organized competition. These include basketball, table tennis, bowling, flag football, volleyball and soccer. Each student is responsible for accident insurance. Stop by the Student Life and Leadership Office for details. Visit spcollege.edu/student-life-leadership.

Volunteer

SPC looks forward to welcoming you as an integral part of our volunteer team. Check out exciting volunteer opportunities at spcollege.edu/volunteer and get involved with your local school community. Your time, knowledge, and experience can make a significant difference in the lives of our dedicated students. We appreciate our volunteers' consideration and sincerely value their service.

Wellness Centers

Our wellness centers are equipped with resistance machines, free weights, and various cardiovascular machines such as treadmills, exercise bicycles, and StairMasters. These workout facilities are free of charge and open when they aren't being used by a physical education class. Visit spcollege.edu/wellness-centers.



Accessibility Services

Accessibility Services carries out SPC's commitment to the open-door concept and equal access to educational opportunities for all qualified individuals with disabilities. Accessibility Services coordinators and staff oversee a variety of services, including classroom and testing accessibility, sign language interpreters, assistive technology, and training through the Accessibility Services office on each campus.

Visit spcollege.edu/accessibility-services.

Campus Safety

SPC is dedicated to providing a safe campus environment. If you have concerns about suspicious behavior or an unsafe situation, report it promptly to campus authorities or to collegewide Security at 727-791-2560. In an emergency, call 911 then notify the security office.

Visit spcollege.edu/safety-security and spcemergency.com for:

- Emergency numbers
- Safety Tips
- Crime and OSHA reports
- Sexual offender list
- Reporting suspected abuse
- Reporting sexual violence and misconduct
- Emergency Response Guide
- Emergency Management Plan
- Hurricane preparedness
- Parking rules
- Weapons on campus policy

Career Services

SPC Career Services can help you select a career direction and the appropriate program of study. We can help with personal assessments, career exploration, and choosing an SPC major. In addition, we help you prepare a job search strategy, discover internship opportunities, develop a resume, and more. Learn about our free career tools, events, and services at spcollege.edu/career-services.

Children on Campus

Other than in an emergency when specifically approved by the campus provost, the provost's designee or a supervisor, employees and students shall not bring children to work or class other than for an occasional quick visit, to drop off a

paper, pick up materials, or other similar activities. In no case is a child to be left unattended on the college premises. If there are questions about the procedure, contact the provost or associate provost on your campus.

Commencement

Commencement is the event or formal celebration of the degree being earned. It is a time for you to receive well-deserved recognition for your hard work. Graduation ceremonies for the college are held two times a year, at the conclusion of the fall and spring terms. Students who complete graduation requirements in the summer term may participate in either the spring or fall ceremony. Since SPC holds the commencement ceremony prior to degrees being verified, students are considered a candidate for graduation. For questions regarding the commencement ceremony, visit spcollege.edu/graduation.

Emergency Preparedness

SPC's Office of Emergency Management is dedicated to the safety of students, staff, and visitors. For all emergency situations (hurricane, tornado, bomb threat, evacuation, etc.), students should stay informed by visiting SPC's Emergency and Hurricane Preparedness website at spcemergency.com, and by registering their phones for SPC Emergency Alerts in their MySPC profile under My Personal Information menu, select Phone Numbers to update home and/or cell number. Select Emergency Notification to confirm if you want to be contacted by cell phone and/or text message and hit Save. Then text YES to 68453 from your cell phone to opt-in for texts. (Persons opted in in the past do not need to opt in again.) We encourage students and staff to read the Emergency Response Guide posted in each building, know where to go during an emergency situation, and have a plan for anticipated emergency situations. **Being prepared is everyone's responsibility.** Updates can also be found by calling or visiting the sites below, and via local news outlets:

- Emergencies – Call 911
- Call SPC Security – 727-791-2560
- Visit SPCemergency.com
- SPC toll-free number – 866-822-3978
- MySPC login – Register your cell phone for emergency alerts

Food Services

Nearly every campus has a place to snack between classes. Explore your options at spcollege.edu/food-services.

Graduating From SPC

Graduation refers to the term in which you have officially and successfully completed all of your degree requirements and the degree is recorded on your official transcript. Email notifications will be sent to students who have been identified as eligible for graduation to the student's SPC email account within six weeks after the term begins. At the end of each term, students who meet all graduation requirements will automatically be awarded their degree or certificate. Students are responsible for determining all graduation requirements are complete. Please review your progress by logging in to MySPC and choosing the My Academics tile, then choose Academic Progress in the navigation bar. It is highly recommended that you meet with your Academic Advisor prior to your last semester in order to review your records and ensure all graduation requirements will be met. For further details, visit spcollege.edu/graduation.

Housing

There are no residence halls at SPC. However, there are several apartment complexes near each college site.

Insurance

The college does not provide accident or health insurance for students. Optional student insurance may be obtained from an insurance company at the student's expense. Certain courses require the student to obtain insurance for which a special fee is charged.

Visit spcollege.edu/student-insurance.

Internships

Internships are supervised, practical learning experiences in a work setting related to your program of study. Through course assignments and workplace projects, you will apply, connect, and extend academic theory and competencies for the purpose of building professional skills and affiliations. Contact internship staff at

727-341-3019 for more information, or go to the internship website at spcollege.edu/internships. Also be sure to read the Internship & Career Connection Blog for opportunities and strategies on obtaining internships at blog.spcollege.edu/careers-internships.

Parking

Parking is free on most SPC campuses, as long as you park in spaces marked and reserved for students. Students are urged to register their vehicle with SPC security at spcollege.edu/parking.

PSTA Bus Pass

Through an agreement between PSTA (Pinellas Suncoast Transit Authority) and SPC, students, faculty, and staff can enjoy free bus service through the Universal Pass, or UPASS. Simply show your current student or staff ID when boarding a PSTA bus and you can ride for free.

Visit spcollege.edu/bus-service.

Student Assistance Counseling Program

If you need support, advice, or just a friendly ear, help is only a phone call away. SPC offers this service FREE to SPC students.

Visit spcollege.edu/counseling-services.

Student ID/Library Card

Your ID card allows you to check out library materials, attend student events, use computer labs, and exercise at any campus wellness center. Your photo ID card also allows you to enjoy free PSTA bus service and free entrance to some special and cultural events. To get a student ID card, you should first visit spcollege.edu/student-ID and make sure you meet all of the requirements and can gather the required information. You can then request an application by sending an email to studentIDcards@spcollege.edu. Once you have sent the application, no further action is needed unless additional information is requested. Student ID cards are printed after the third week of classes after the start of each semester, and you should allow for a 30-day turnaround from that time to receive your ID card in the mail.

Visit spcollege.edu/student-ID for more information.

Student Support Services Program

Student Support Services (SSS) is a federally funded grant program under the Department of Education. SSS is a limited access program in which services are provided to first generation and limited-income students. SSS provides services such as tutoring, academic advisement, textbook & laptop lending, scholarships, cultural events, and a list of additional services to ensure retention and graduation. Visit spcollege.edu/ss.

Technical Support Center

From registration to coursework to email and everything in between, the support center can assist with technical issues related to MySPC, MyCourses, student email, and other technology-related issues. Hours are 7 a.m. to midnight, seven days a week. They can be reached at 727-341-4357 or via email at onlinehelp@spcollege.edu. Visit support.spcollege.edu for more information.

Textbooks

You can purchase or rent new, used, or digital books at bookstores operated on campus and online by Barnes & Noble. You can automatically order your textbooks after you register in MySPC and have them shipped to your home or pick them up at any of the Barnes & Noble bookstores on campus. If you are receiving financial aid and your aid exceeds your tuition and fee charges, you may purchase books and supplies using our Book Line of Credit, a short-term, interest-free loan at our campus bookstores. Visit spcollege.edu/textbooks.

Titans Care Centers

SPC is here to help you navigate student life and offers assistance in several areas to help you stay safe and healthy. Whether you need child care assistance, community resources for life issues, counseling services, food pantries, or free bus rides, we are here to help. Visit spcollege.edu/titans-care-resources for more information.

Veterans Services

SPC has been consistently named one of the top veteran-friendly colleges in the country. Veterans Services student support staff will offer help with Department of Veterans Affairs (VA) educational benefits. Veterans Services Student Support Centers on campus provide specialized resources to Veterans, eligible dependents, active duty servicepersons, and members of the Selected Reserve. Visit spcollege.edu/veterans-services.

Women on the Way (WOW)

Through collaboration and support, Women on the Way (WOW) empowers and inspires students to be resilient in achieving success. The program has been helping women succeed since 1981. WOW, located on SPC's Clearwater, Seminole, and St. Petersburg/Gibbs campuses, serves as a resource and support program designed to meet the educational needs of enrolled students who are seeking to complete a college degree or certification. Visit spcollege.edu/wow.



Not sure how to pay for college?

Financial Assistance Services provides guidance on grants, scholarships, student employment, and loans to help pay college expenses. Online student services keep the same hours as you – 24/7. Log in to MySPC for instant access to your financial aid information under the Financial Aid tile, or visit spcollege.edu/financial-aid for a step-by-step checklist to apply for financial aid and the most up-to-date information on a wide range of topics.

Free Application for Federal Student Aid (FAFSA)

To apply for financial aid, you need to complete a Free Application for Federal Student Aid (FAFSA) at fafsa.gov. The information you provide determines whether you qualify for federal and state grants and federal loans. To complete the FAFSA, you will need to get an FSA ID at fafsa.gov.

Contact Us

Financial Aid Services is here to help! Ask questions using the most convenient method for you.

Choose from:

- **PHONE** – Call 727-791-2485
- **PETE** – Our chatbot answers questions 24/7/354. To find PETE, go to spcollege.edu/financial-aid and look in the lower right corner.
- **ONLINE** – Submit your question online at spcollege.edu/askfas and select “Online.”
- **VIRTUAL** – Speak with a live SPC financial aid counselor at spcollege.edu/askfas and select “Virtual.”
- **ON CAMPUS** – Find campus hours and locations at spcollege.edu/askfas and select “On Campus.”
- **WEBSITE** – Search spcollege.edu/financial-aid for detailed information, including instructional videos, on all financial aid topics.
- Student loan questions can be answered by logging into iontuition through MySPC or by calling i3 Group at 855-693-4932.

Receiving Funds

You begin receiving financial aid refunds at the end of the fourth week of classes of the earliest term in which you are enrolled. If you are enrolled only in Express or Second 8-Week Module classes, your financial aid will be refunded at the end of the fourth week of that term. It is your responsibility to understand the attendance policies of all courses in which you are enrolled.

Visit spcollege.edu/receiving-financial-aid.

Tuition and Fees

SPC deducts tuition and fees from your financial aid award directly. If your award is less than the cost of tuition and fees, you must pay the difference by the tuition due date. If you attend less than full-time during any term, your cost of attendance and financial aid award amounts will be adjusted. This could result in a reduction or removal of loans or other financial aid.

Visit spcollege.edu/financial-aid.

Book Line of Credit

If your financial aid exceeds your tuition and fee charges, you may charge up to \$800 in books and supplies using the Book Line of Credit (a short-term, interest-free loan) at campus bookstores. The amount of your Book Line of Credit is based on projected financial aid that will be refunded at the end of the fourth week of your classes. The bookstore will have your information on file and will apply your available book charges against your student account.

Visit spcollege.edu/book-line-of-credit.

Disbursements

Disbursements occur when SPC receives federal, state, or other funds on your behalf. These funds are disbursed to your student account to cover your tuition, fees, and Book Line of Credit charges. The disbursement date is the date you will see in MySPC; however, this is not the date your excess funds are refunded to your refund option choice.

Loan disbursements – If your loan is for fall and spring, it will be disbursed in two payments, one half during the fourth week of your fall enrollment and one half during the fourth week of your spring enrollment. If your loan is for one term only, the entire loan will be disbursed in one payment during the fourth week of your enrollment for that term.

Refunds

Refunds to BankMobile or your personal banking account occur when the amount of the disbursements received on your behalf is greater than the amount owed for tuition, fees, the Book Line of Credit and first day book charges. The excess funds will be refunded to the refund option choice you made on BankMobile. Choices include same business day deposit to the Vibe BankMobile Account (the fastest way to receive your funds) or direct deposit to your bank of choice account (funds available in 2-3 business days). Financial aid refunds begin at the end of the fourth week of classes of the earliest session in which you are enrolled. Visit spcollege.edu/financial-aid-refunds for refund dates and other details.

Student Employment Pay

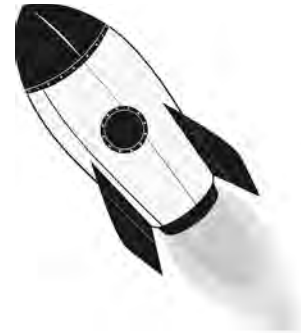
Students working through student employment programs of Federal Work Study, America Reads, America Counts, or Student Assistants will receive their paychecks bi-weekly through their supervisor or directly deposited into their bank accounts. Visit spcollege.edu/student-employment.

Satisfactory Academic Progress

Federal regulations require that all students who receive financial aid demonstrate that they are moving through their academic program at a reasonable rate and are making progress toward their degree in order to continue receiving financial aid. Visit spcollege.edu/sap.

Withdrawing from Class

CAUTION: If you are a financial aid recipient and are thinking about dropping one or more classes or withdrawing from the college, please consult a financial aid counselor first to be sure you understand the consequences of this decision. Visit spcollege.edu/withdrawals.



It's MY FUTURE!

St. Petersburg College provides FREE, easy-to-use loan management and planning tools so you can afford to finish your education without accumulating a pile of debt. Our best advice is:

- Don't borrow if you don't have to.
- If you need to borrow, borrow only what you need.
- Stay in contact with your student loan servicer to stay on top of what you owe.
- On-time repayment will help you establish a good credit rating.

iontuition™, an online student loan management tool available through a single sign-on process in MySPC, makes it easy to manage your student loans all in one place! You may see your loan status, balance, payment amount, due date, interest information, and servicer contacts. You can elect to receive loan status notifications via email or text. A live chat option is available.

i3 Group is available to help with any questions regarding repayment of your student loans. Talk with an experienced counselor about repayment and postponement options. If you receive a call from i3 Group, they are calling on behalf of SPC. Visit spcollege.edu/its-my-future.

The most up-to-date student and academic information is available on the college website, spcollege.edu. Access important information about Board of Trustees Rules and College Procedures, students' rights and responsibilities, as well as student privacy and other policies and procedures at web.spcollege.edu/botrules.

Student Right-to-Know

Compliance and policy information for the following topics can be found at spcollege.edu/student-rights.

Academic Policies

- Academic Calendar
- Academic Honesty Policies, Honor Code
- Academic Integrity Policies and Procedures
- Academic Standing Policy
- Accreditation
- Articulation Agreements
- Attendance
- Auditing Classes Procedure
- College Catalog
- College of Education 2020-21 Title II EPI Report
- College of Education 2020-21 Title II ITP Report
- Course Repeat Procedure
- Current degree programs – Degrees + Training
- Current degree programs – Program Explorer
- Disciplinary Procedure
- Drop with a Refund
- Faculty and Instructional Personnel
- Faculty Resources
- Family Educational Rights and Privacy Act (FERPA)
- Florida Virtual Campus
- General Educational Development (GED)
- General Education Requirements
- Grading System
- Health and Safety Exemption Requirement
- Health Program Admissions
- Incomplete Grades Procedure
- Online Services
- Residents Outside of Florida and Professional Licensure
- Student Code of Conduct
- Student Ombudsman Office
- Student Organization Procedure
- Teach-Out Plan (Substantive Change)

- Transfer of Credit Procedure
- Withdrawal
- Warning, Probation, Suspension and Dismissal Procedure

Admissions

- Academic Programs
- Admission
- Admission Application
- Compensation for Recruiters and Admissions Staff
- Future Titans
- Program Admission Requirements
- Readmission
- Transfer Credit

Safety and Security

- Access to SPC Campuses
- Annual Security Report
- Campus Crime Reports
- Daily Crime Log
- Emergency Response/Evacuation
- Missing Student Notification Policy and Procedure
- Parking
- Reporting Abuse of a Minor
- Reporting a Crime/Important Numbers
- Safety Tips
- Sexual Harassment Policies and Information
- Sexual Offenders and Predators List
- Sexual Violence and Misconduct
- Threat Assessment
- Timely Warnings and Emergency Notifications
- Weapons and Firearms on Campus

Disputes and Appeals

- Complaints
- Contact SPC
- Discrimination Policy and Information
- Equal Opportunity/Equal Access
- Grievances and Appeals
- Student Ombudsman Office

Health

- Accessibility Services
- Drug and Alcohol Abuse Prevention
- Hepatitis B
- HIV/Aids Education
- Meningococcal Meningitis
- Student Assistance Program
- Tobacco/Smoke Free Campus Procedure (adopted August 2016)
- Vaccination Policy

Statistics

- Bachelor's Degrees
- Employment, Continuing Ed and Annualized Earnings by Year, select AS FETPIP Dashboard
- College Navigator
- Facts and Enrollment Statistics
- Florida College Transfer Students Attending Florida Public Universities
- Graduation Rates
- Graduation Rates for Certificate programs
- Graduation Rates for Student Athletes
- Net Price Calculator
- Placement Rates
- Retention Rates
- SPC Fact Book
- State's Economic Security Report
- Student Body Diversity
- University Partnership Center

Financial

- Have a financial aid question? Ask PETE, our chatbot, or ask online, virtually, on campus or by phone
- Available Financial Aid
- Apply for Financial Aid
- Avoiding Student Aid Scams - what to watch for and how to report them
- BankMobile Disbursements
- Calculating Your Financial Aid Award Package
- Campus Based Policy
- Contact SPC
- Cost of Attendance
- Degrees and Training
- Dependency Overrides

- Direct Loan (Federal Direct Student Loan) Model Disclosure Form
- Federal Pell Grant
- Financial Aid Contacts
- Financial Aid Eligibility Requirements
- Financial Aid Refunds
- Grant Assistance From Your Home State
- It's MY FUTURE! Financial Literacy Program
- Last Day To Drop With A Refund (Drop/Add Policy)
- Net Price Calculator
- Private Student Loans
- Professional Judgement (includes Dependency Override)
- Refund Policy
- Return to Title IV Policy
- Rights and Responsibilities of Financial Aid Recipients (known as SPC as Conditions of Financial Assistance)
- Satisfactory Academic Progress (SAP)
- SPC Tuition Refunds
- Student Aid Eligibility Worksheet, select Possessing or Selling Illegal Drugs
- Student Complaints
- Student Grievances and Appeals
- Student Loan Entrance Counseling
- Student Loan Exit Counseling
- Study Abroad Financial Aid Eligibility
- Textbook Information
- Tuition and Fees
- Verification
- Withdrawals (includes Official and Unofficial Withdrawals and Return to Title IV Funds)

Other

- College Navigator
- Copyright Regulations
- Compliance Statements
- Constitution Day
- Establishing and Maintaining an Information Security Program
- Information Technology Acceptable Use
- Information Security and Privacy Policy
- Peer-to-Peer File Sharing
- Privacy Policy

- Refund Procedure
- Social Security Number Usage
- Study Abroad
- Third Party Servicers involved in Marketing, Recruitment and Admissions and the Administration of Title IV Financial Aid
- Voter Registration

SPC Complaint Policy

SPC is always looking for ways to improve. We are committed to providing prompt and fair resolution of all student concerns and strive to make the process of communicating such concerns as easy as possible. We take these concerns very seriously and the information below outlines this process. Examples of student complaints related to this policy include matters relating to college facilities (services received, facilities, etc.) or other services such as the college bookstore, student services, or campus cafeteria. To make a formal complaint:

1. Access the college's Student Complaint website at spcollege.edu/complaint.
2. Complete and submit the online complaint form. If you are unable to submit an electronic form, a college employee may submit the form on your behalf.
3. Your complaint will be routed to the appropriate department and you will receive confirmation of receipt within 24 hours (not counting days the college is closed) that the complaint has been received.
4. The complaint will be processed and you will be notified of the resolution in writing.

Academic appeals and student grievances are not considered complaints and should be lodged through the formal student grievance/appeal process found in the SPC Board of Trustees Rules and College Procedures (P6Hx23-4.36). If you have an academic grievance or appeal, please utilize this process. Visit spcollege.edu/student-rights for more information.

Conduct

SPC students are expected to conduct themselves in a manner that will reflect credit to the college, the community, and themselves. Each student, by registering, assumes the responsibility to become familiar with and abide by the general regulations and rules of conduct outlined at spcollege.edu/student-rights.

Controlled Substances, Alcoholic Beverages, Tobacco, and Smoking

The SPC Code of Conduct prohibits the possession or consumption of alcoholic beverages, and/or the use, possession, sale, barter, exchange, gift, distribution, or other transaction of any drugs which would be in violation of state or federal law at any college-related event. See BOT Procedure 6Hx23-4.33. SPC is a tobacco and smoke free college. Smoking and/or the use of any tobacco is prohibited in all College facilities and on all College property, without exception, including but not limited to, all buildings and portions of buildings owned or leased by the College, including, without limitation, atria, entry ways and enclosed hallways within buildings. Outdoor areas include, but are not limited to, parking lots, grounds, rooftops, plazas, courtyards, entrance and exit ways, and any other areas of the College campus. See BOT Procedure P64x23-1.37. The priority of the College with respect to alcohol, drugs, tobacco, and smoking is to ensure the safety and well-being of students and comply with all applicable laws. Sanctions for violations can include, in severe cases, suspension and dismissal from the College, as well as criminal penalties related to Florida Statute Chapter 893 and/or any applicable state or federal laws. Visit stpe.co/flstatutech893 for more information.

Copyright Regulations

SPC supports and encourages its employees and students to develop scholarly and creative works and educational materials and products (intellectual property) which may be subject to copyright, trademark, or patent regulations and which may generate royalty income. Also, ownership in a work prohibits another's copying of the work or distributing copies of the work unless one or more of the following apply:

- the work was never copyrighted
- the copyright in the work has expired
- the work lies in the public domain
- the copying and/or distribution falls within "fair use" privileged under Section 107 of the Copyright Act of 1976
- the copying and/or distribution falls under certain library or archival copying privileged under Section 108 of the Copyright Act of 1976
- the copyright owner has given appropriate permission

The College's rules and procedures are designed to balance, protect, and define the respective rights of St. Petersburg College, its employees and students regarding intellectual property and copyright laws. Refer to Board of Trustees' Rules and Procedures 6Hx23-1.35, P6Hx23-

1.35, P6Hx23-1.351 for copyright policies and a description of published and unpublished materials that may be subject to copyright regulations. Visit web.spcollege.edu/botrules for more information.

Discrimination

SPC does not tolerate discrimination in its employment practices or in the admission and treatment of students. All SPC employees and students are responsible to adhere to SPC's Nondiscrimination Policy. Violators are subject to disciplinary action, which may include reprimand, suspension, or dismissal. For information on types of discrimination, College policies, and reporting information, visit spcollege.edu/discrimination.

HIV/AIDS

Information on the Human Immunodeficiency Virus and its prevention can be found at hivinfo.nih.gov.

Reporting Abuse of a Minor

Under Florida Law, all persons have a legal obligation to report suspected instances of child abuse, neglect or abandonment, regardless of whether an alleged perpetrator is the child's parent, legal custodian, caregiver or other person responsible for the child's welfare. Get more information on reporting obligations at the Florida Abuse Hotline (1-800-962-2873) or online via the website Florida Department of Children and Families website.

In addition, Florida college administrators are obligated to timely report, under penalty of law, any knowledge or reasonable suspicion that an abuse, neglect or abandonment of a minor has occurred on college property or during a college sponsored activity, event or function. All students and employees who have knowledge of, or have reasonable cause to suspect, the abuse, neglect or abandonment of a minor on campus must report such knowledge or suspicion to Campus Security (727-791-2560) and to the Campus Provost, and as

may be appropriate, to the Florida Abuse Hotline. Remember, if there is an emergency, first dial 911 for emergency assistance, and then Campus Security. Failure to properly report may result in substantial institutional sanctions and employee discipline.

For more information regarding the definitions of abuse and neglect, sanctions for non-compliance, and reporting obligations of college employees, please see the Board of Trustees' College Procedure at Reporting Abuse of a Minor.

Safety Reports

SPC's Security Department is dedicated to the safety of students, staff, and visitors by providing quality services and information to help make the time that you spend at SPC safe and enjoyable. Visit spcollege.edu/student-rights for current reports on:

- Criminal activity on campus/neighborhood area
- Sexual Offenders List
- OSHA Report

A hard copy of the safety reports will be provided upon request.

Sexual Harassment

SPC has a strong commitment to keeping its workplaces and classrooms free from sexual harassment. The responsibility for doing so rests with each member of the college community. For information on types of sexual harassment, frequently asked questions, and reporting contacts, visit spcollege.edu/sexual-harassment.

Sexual Violence and Misconduct

SPC is committed to preventing sexual violence (including sexual assault) and sexual harassment on all of its campuses and other facilities. For more information on sexual violence and misconduct on campus, including SPC's policies and procedures, reporting information, what is prohibited, penalties, victim's rights, available resources, and more, visit spcollege.edu/sexual-misconduct.

Student Records

Students and eligible parents and guardians have the rights as afforded by the Family Educational Rights and Privacy Act (FERPA) to:

- Inspect and review education records within 30 days of the day the college receives a request for access
- Request the amendment of a student education record the student believes is inaccurate
- Consent to disclosures of personally identifiable information contained in the student's education records, except to the extent that FERPA authorizes disclosure without consent
- Obtain a copy of the college's policy on student records from the office of the Associate Provost on each campus, center, or site
- Restrict the release of college directory information, which can be done in the "My Information" section of MySPC
- File a complaint concerning any and all alleged failures of a state college to comply with the requirements of FERPA with the Family Policy Compliance Office, U.S. Department of Education, 400 Maryland Avenue SW, Washington, DC 20202-5901

For more information on FERPA, what constitutes directory information, and how to exercise your right to restrict access to it, visit spcollege.edu/student-rights.

Students also have a responsibility to keep the information in their student record up-to-date. Some of these changes (address, phone number, home email) can be done by the student in MySPC under the Profile tab. However, name, date of birth, and social security number changes must be initiated by the student completing a Request for Change of Official SPC Records form and submitting it to the Admissions and Records Department. Forms can be found at spcollege.edu/forms-online.

Service Animals

SPC is committed to providing a learning and work environment that is inclusive of all and welcomes those with service animals on campus and in the classroom, as well as at all college activities and events.

For more information on the use of service animals, please see Board of Trustees Rules and College Procedures 6Hx23-1.251 and the Information for Individuals Using Service Animals page at spcollege.edu/service-animals.

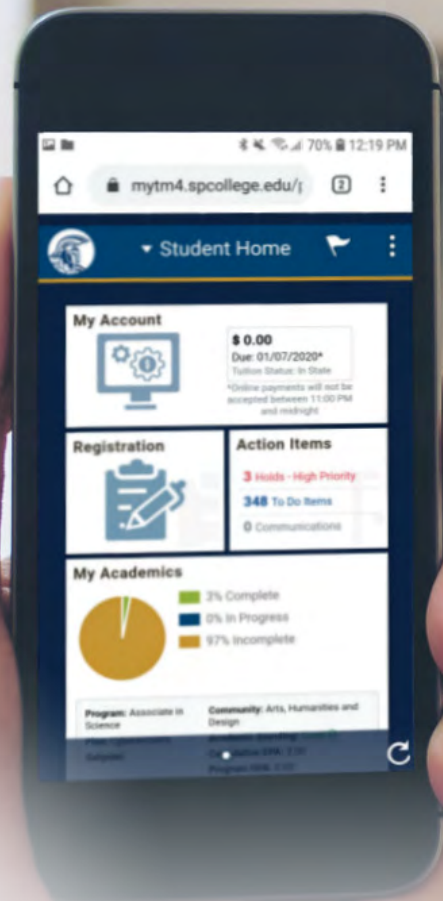


MySPC

YOUR COLLEGE EXPERIENCE AT YOUR FINGERTIPS!

What you can do in MySPC:

- Register and pay for classes
- Check your financial aid status
- Update your contact information
- View your To-Do List
- Contact an academic advisor
- Request an official transcript or view your unofficial transcript
- Print enrollment verification certificates
- Connect to student resources such as tutoring
- Link to the calendar to stay involved with SPC events
- And much more!



**EASY TO USE AND
MOBILE FRIENDLY**

spc.edu/myspc

TITANS
STRONG!



SPC St. Petersburg
College
spcollege.edu